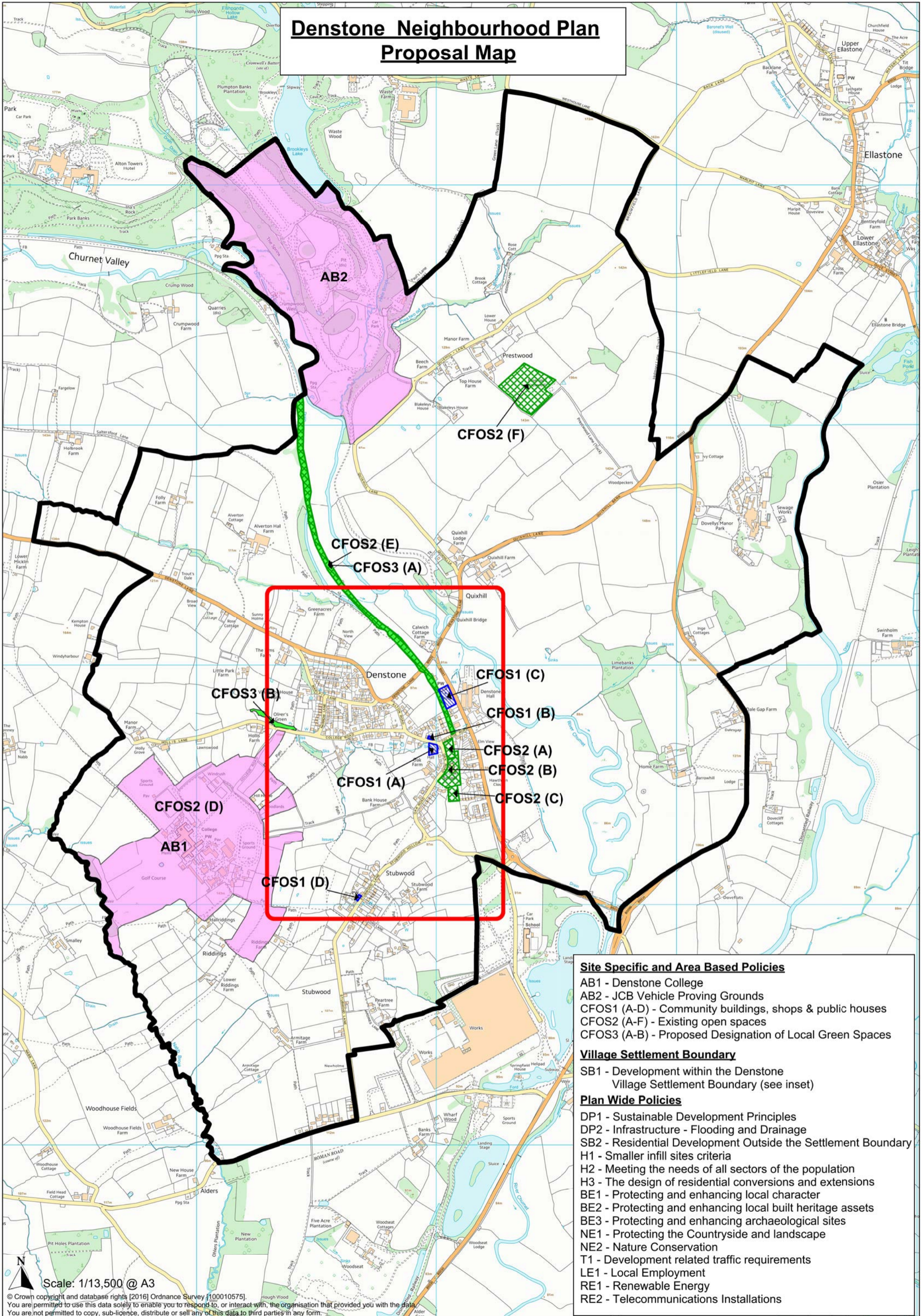


Denstone Neighbourhood Plan Proposal Map



- Site Specific and Area Based Policies**
- AB1 - Denstone College
 - AB2 - JCB Vehicle Proving Grounds
 - CFOS1 (A-D) - Community buildings, shops & public houses
 - CFOS2 (A-F) - Existing open spaces
 - CFOS3 (A-B) - Proposed Designation of Local Green Spaces
- Village Settlement Boundary**
- SB1 - Development within the Denstone Village Settlement Boundary (see inset)
- Plan Wide Policies**
- DP1 - Sustainable Development Principles
 - DP2 - Infrastructure - Flooding and Drainage
 - SB2 - Residential Development Outside the Settlement Boundary
 - H1 - Smaller infill sites criteria
 - H2 - Meeting the needs of all sectors of the population
 - H3 - The design of residential conversions and extensions
 - BE1 - Protecting and enhancing local character
 - BE2 - Protecting and enhancing local built heritage assets
 - BE3 - Protecting and enhancing archaeological sites
 - NE1 - Protecting the Countryside and landscape
 - NE2 - Nature Conservation
 - T1 - Development related traffic requirements
 - LE1 - Local Employment
 - RE1 - Renewable Energy
 - RE2 - Telecommunications Installations