

Marchington Neighbourhood Plan Proposals Map

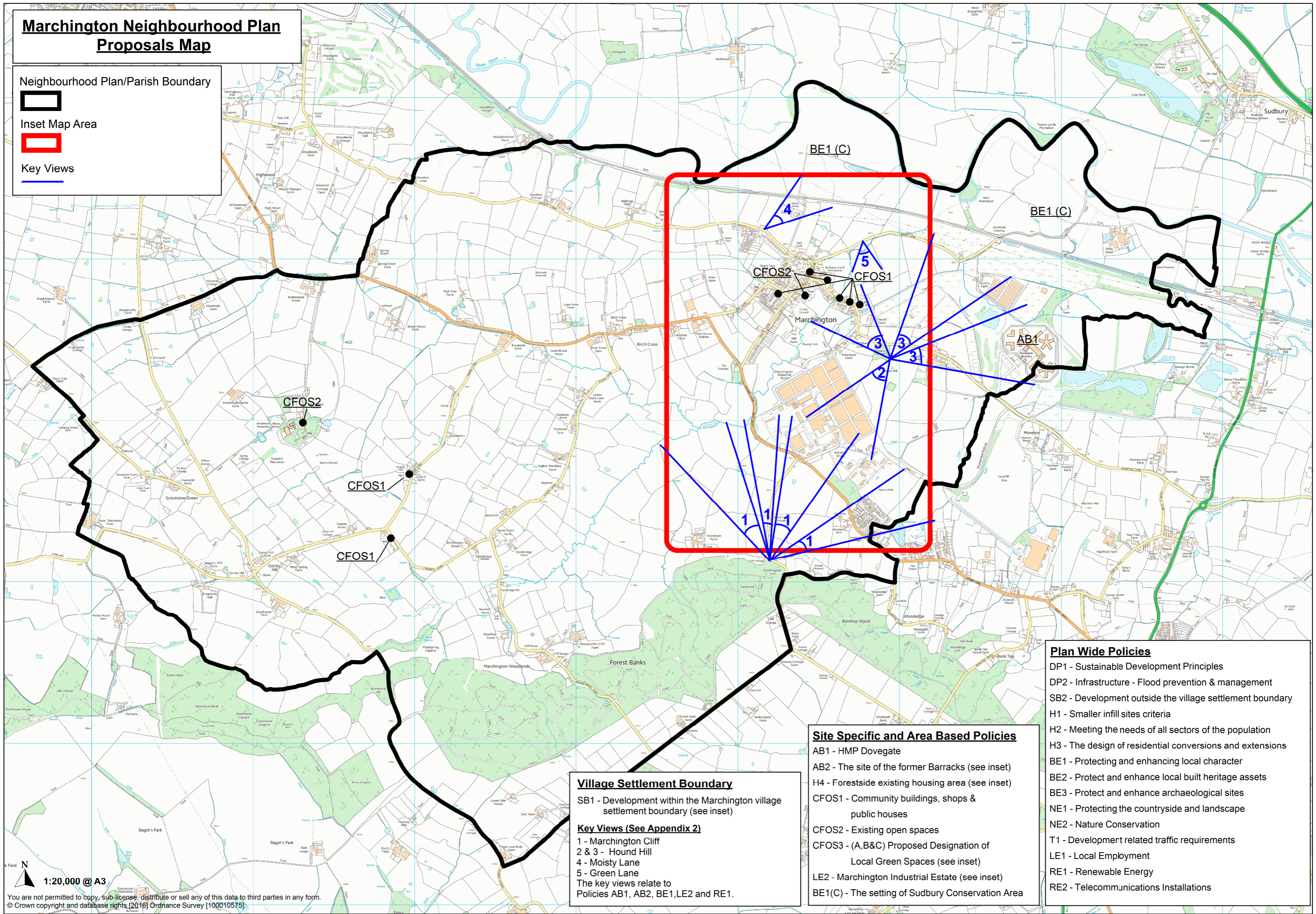
Neighbourhood Plan/Parish Boundary



Inset Map Area



Key Views



Plan Wide Policies

- DP1 - Sustainable Development Principles
- DP2 - Infrastructure - Flood prevention & management
- SB2 - Development outside the village settlement boundary
- H1 - Smaller infill sites criteria
- H2 - Meeting the needs of all sectors of the population
- H3 - The design of residential conversions and extensions
- BE1 - Protecting and enhancing local character
- BE2 - Protect and enhance local built heritage assets
- BE3 - Protect and enhance archaeological sites
- NE1 - Protecting the countryside and landscape
- NE2 - Nature Conservation
- T1 - Development related traffic requirements
- LE1 - Local Employment
- RE1 - Renewable Energy
- RE2 - Telecommunications Installations

Site Specific and Area Based Policies

- AB1 - HMP Dovegate
- AB2 - The site of the former Barracks (see inset)
- H4 - Forestside existing housing area (see inset)
- CFOS1 - Community buildings, shops & public houses
- CFOS2 - Existing open spaces
- CFOS3 - (A,B&C) Proposed Designation of Local Green Spaces (see inset)
- LE2 - Marchington Industrial Estate (see inset)
- BE1(C) - The setting of Sudbury Conservation Area

Village Settlement Boundary

SB1 - Development within the Marchington village settlement boundary (see inset)

Key Views (See Appendix 2)

- 1 - Marchington Cliff
 - 2 & 3 - Hound Hill
 - 4 - Moisty Lane
 - 5 - Green Lane
- The key views relate to Policies AB1, AB2, BE1, LE2 and RE1.

1:20,000 @ A3

You are not permitted to copy, sub-license, distribute or sell any of this data to third parties in any form.
© Crown copyright and database rights [2016] Ordnance Survey [100010575]