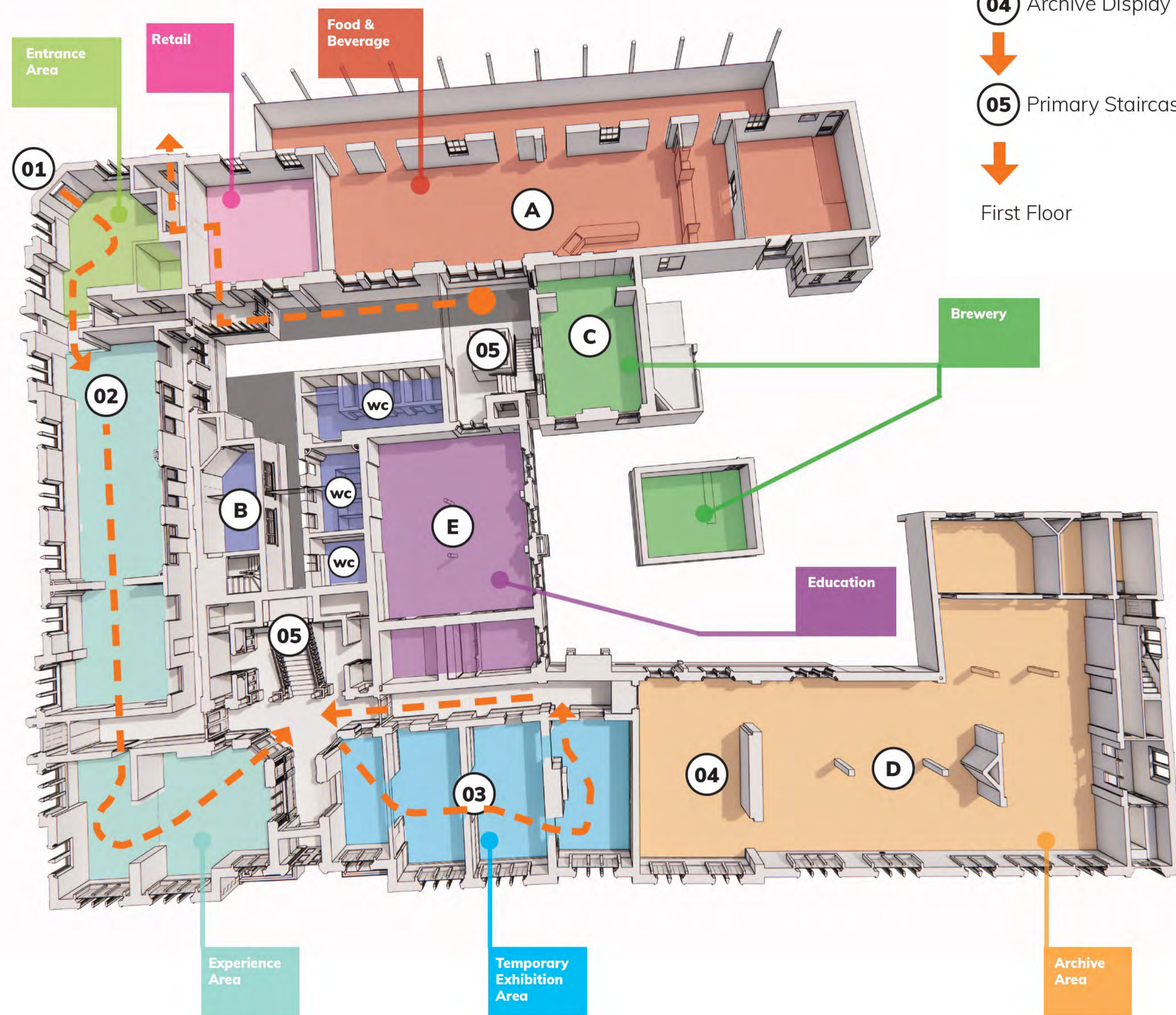


# Bass House

## Bass House Visitor Journey



### Ground Floor Visitor Journey

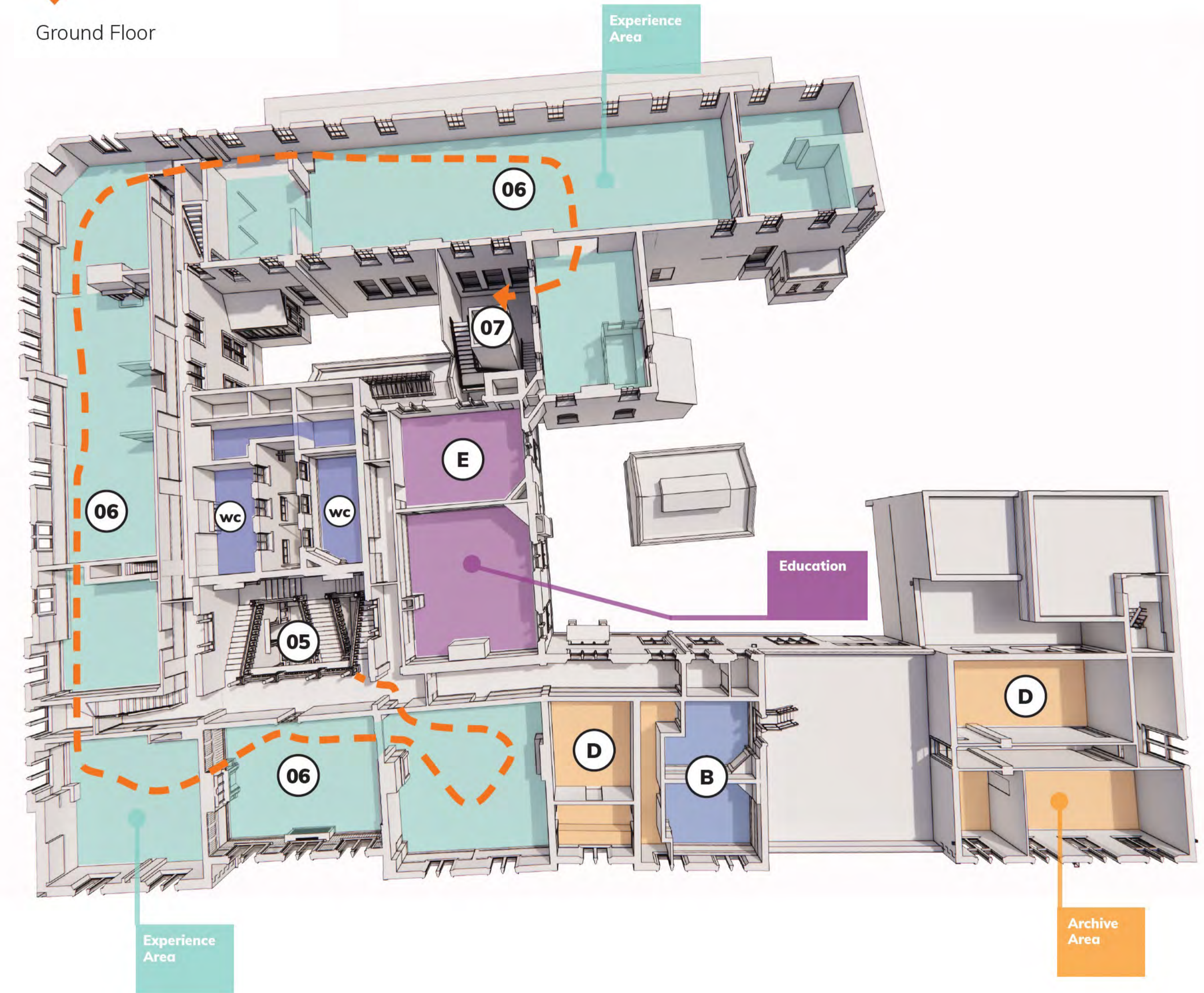
- 01 Entrance
  - 02 Primary Experience Area
  - 03 Temporary Exhibition
  - 04 Archive Display
  - 05 Primary Staircase
- Ground Floor

### First Floor Visitor Journey

- 05 Primary Staircase
  - 06 Primary Experience Area
  - 07 Secondary Staircase
- Ground Floor

### Key Ancillary Spaces

- A Food & Beverage
- B Office / Support
- C Brewery
- D Archive
- E Education



## Burton High Street Project



Use the QR above to view a series of Panoramic views on your iOS or Android device

# Events Plaza

Central community event space to serve varying services, activities and events

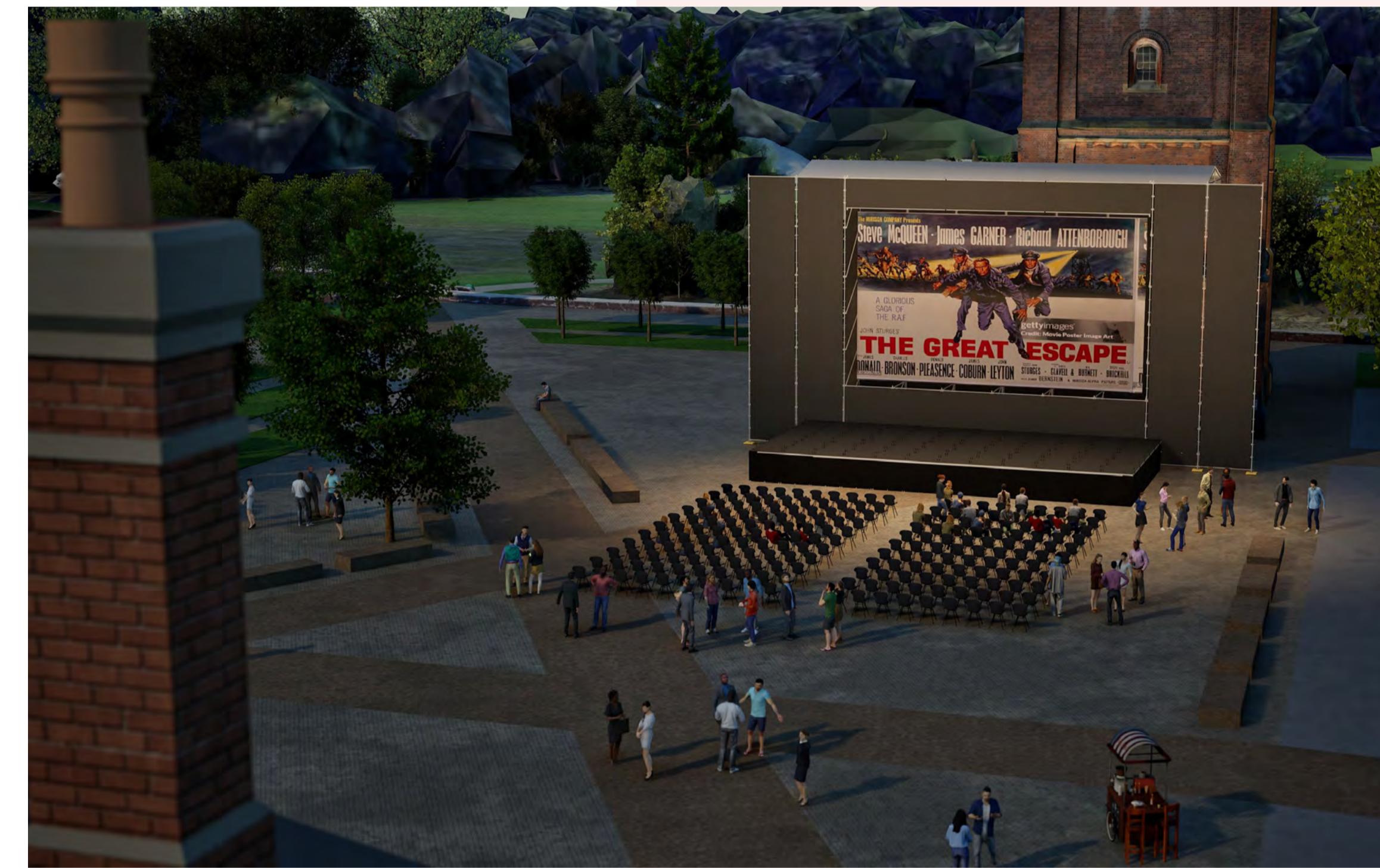
## The Central Events Plaza

This new community event space is designed to serve as a vibrant focal point, seamlessly connecting the town centre, the historic brewery site, and the natural beauty of the Washlands.

By establishing clear sightlines and pathways, the plaza will reconnect the wider urban area with the washlands, enhancing the town's relationship with its riverside setting.

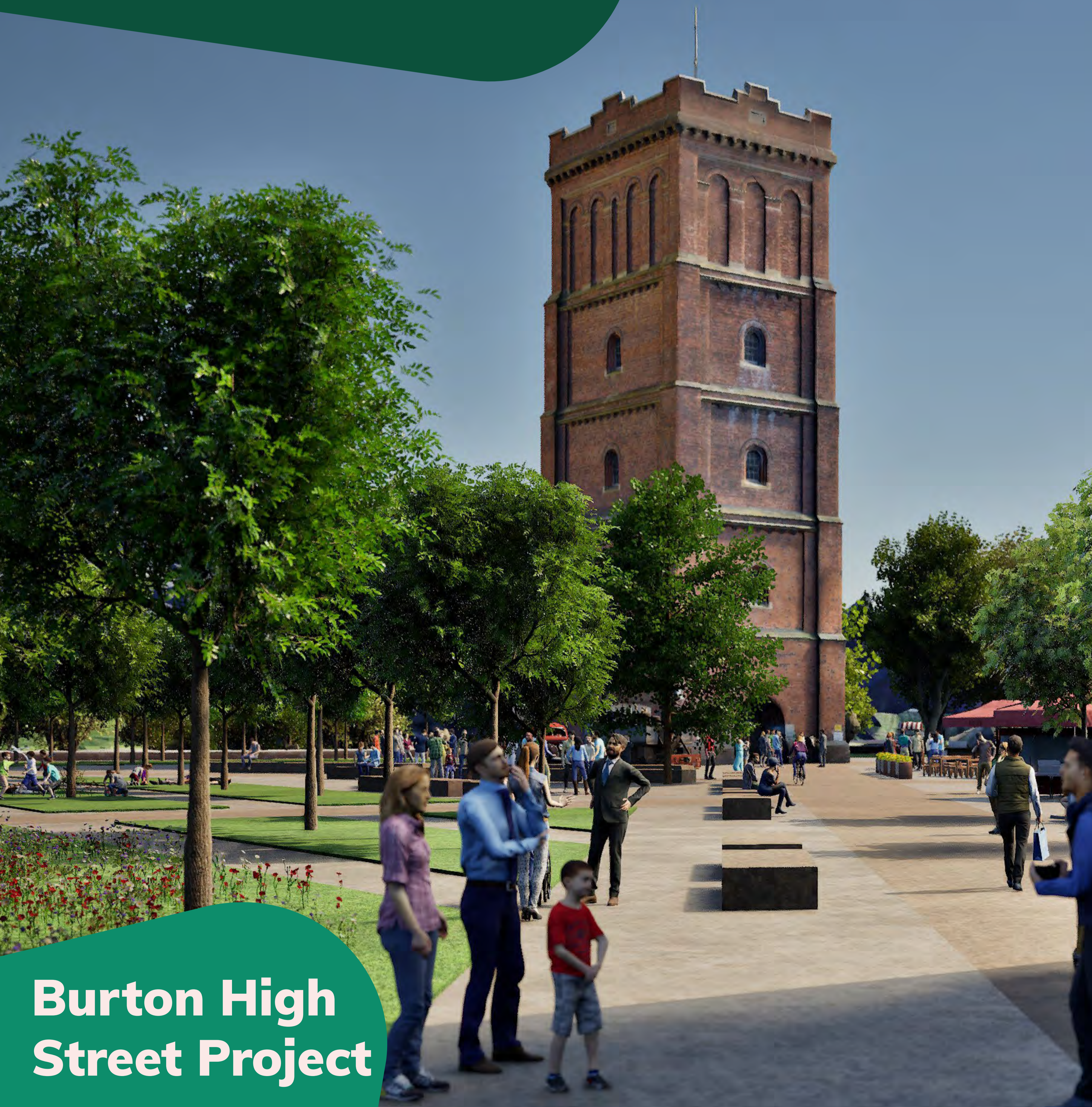
The plaza's high quality design will incorporate appropriate and sustainable features, ensuring that the space can accommodate a range of events, activities and performances throughout the year.

## Burton High Street Project



# Water Tower

Heritage asset with aspirations to bring into active use

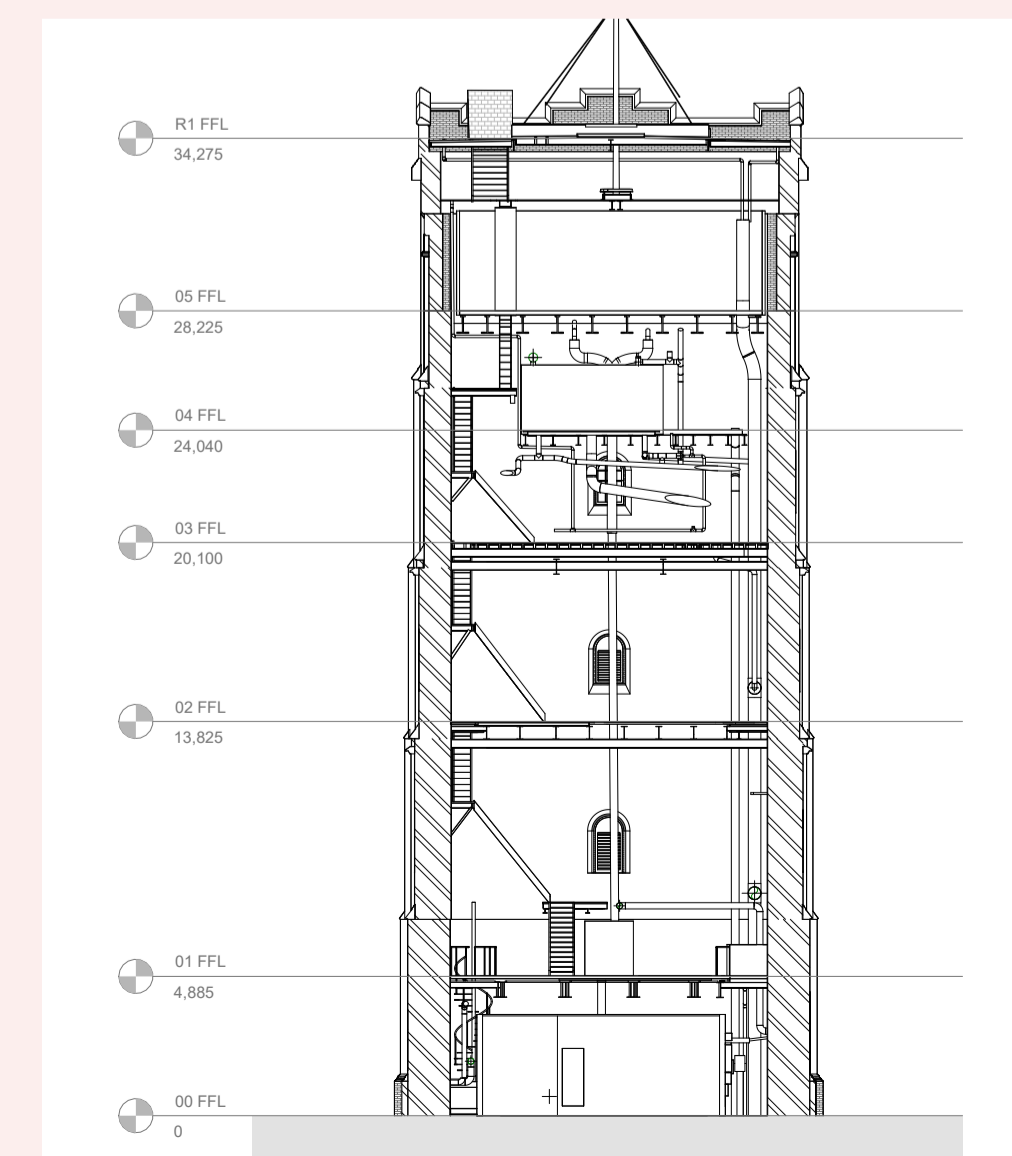


## Burton High Street Project

### Refurbishment and Reuse of the Water Tower

The Water Tower is intended to be regenerated into a prominent visitor attraction as part of the wider brewery heritage experience.

The Water Tower will be revitalized to protect and enhance Burton's brewing heritage with an aspiration to provide a rooftop viewing point.



Pano-Path 4



Use the QR above to view a series of Panoramic views on your iOS or Android device

# Carling House

Existing Office building converted to a branded Hotel



Burton High Street Project

## Conversion from Office to Hotel Use

Promoting a sustainable reuse of the existing building, a conversion of Carling House into a hotel is being progressed. The design of

the building means that it can be repurposed and reconfigured into a modern hotel, supporting the wider visitor experience.



Pano-Hotel



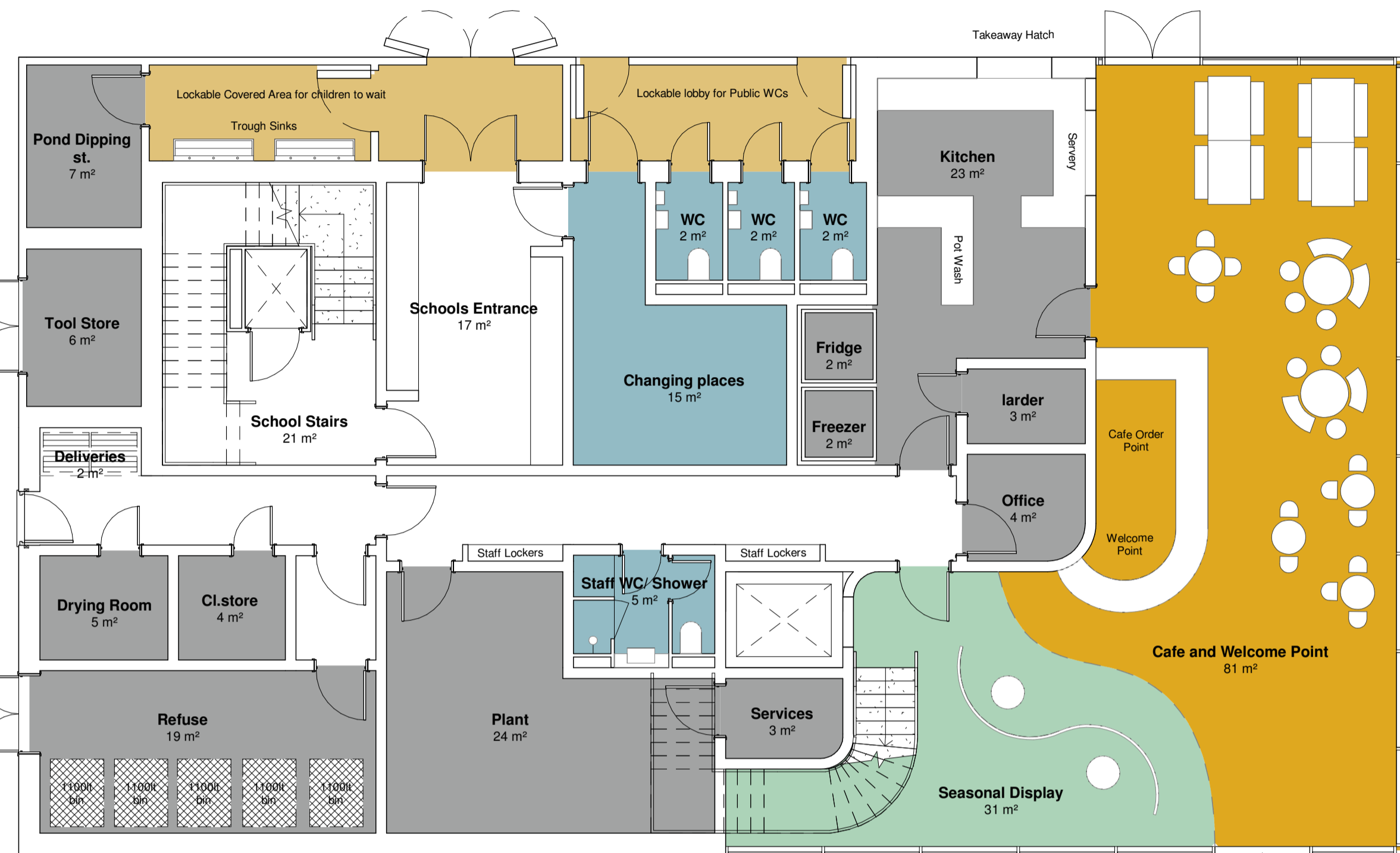
Use the QR above to view a series of Panoramic views on your iOS or Android device

# Washlands Visitor Centre

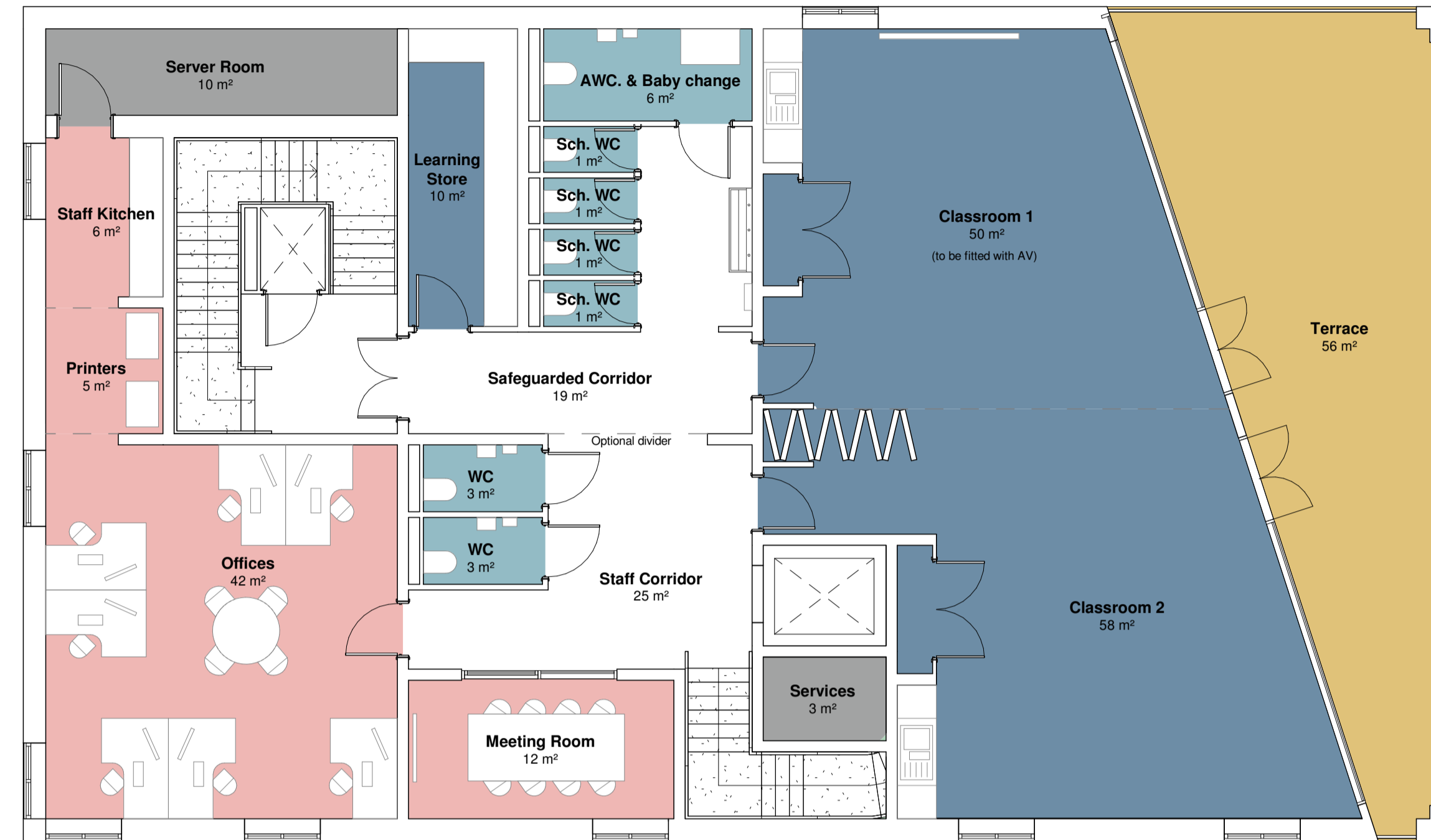
New build Washlands Visitor Centre developed in partnership with Staffordshire Wildlife Trust

## New build Washlands Visitor Centre

To provide a new visitor and education centre that accompanies the enhancements at the Washlands. The visitors centre contains seasonal displays, classrooms, cafe and terrace for residents and visitors to learn and appreciate more about Burton upon Trent's riverside environment. Developed in partnership with Staffordshire Wildlife Trust.



Ground Floor Plan



First Floor Plan



## Burton High Street Project



Pano-Path 5



Use the QR above to view a series of Panoramic views on your iOS or Android device