

Ward – Tutbury & Outwoods

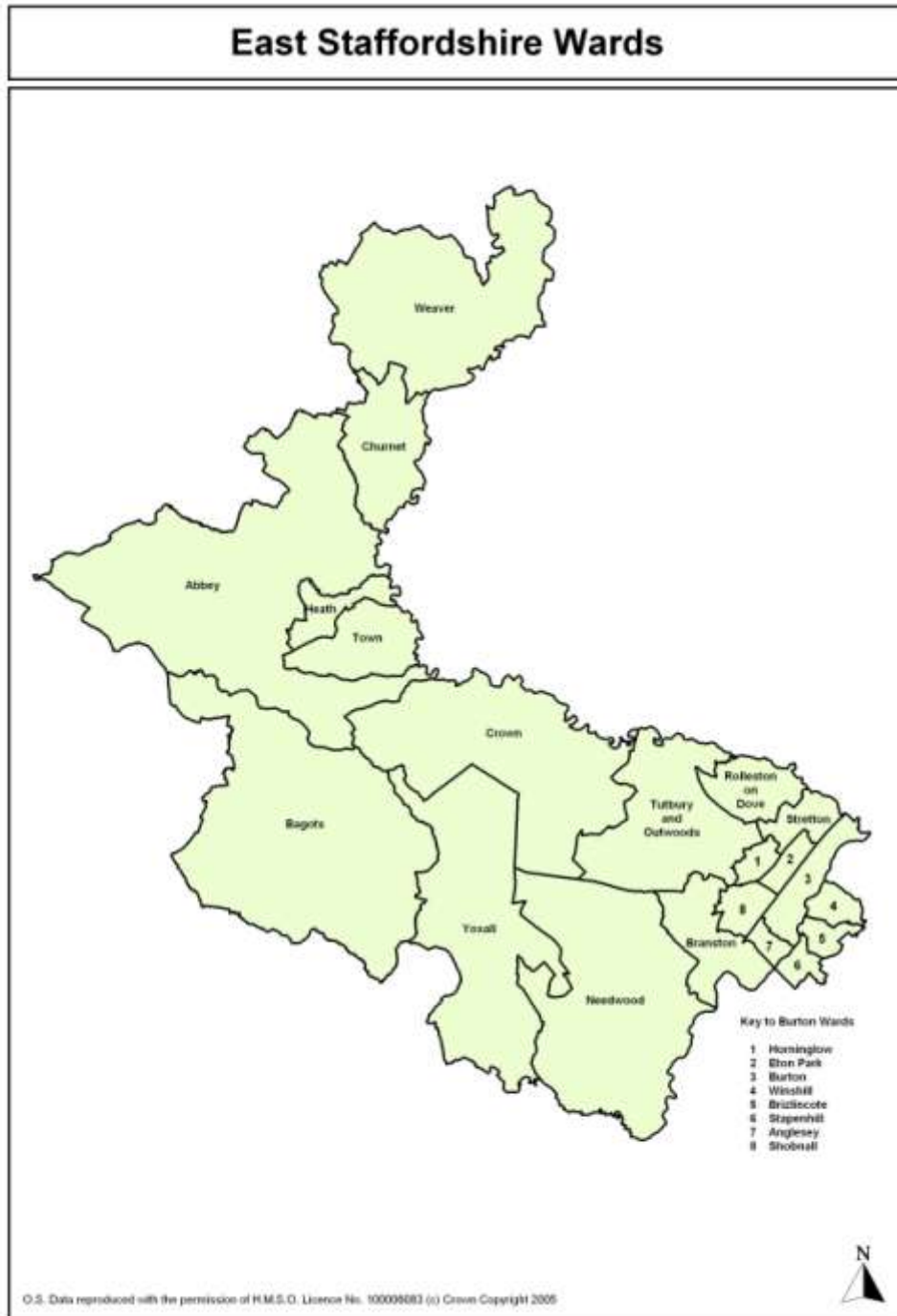
Councillors

Stephen Smith – Conservative

Liz Staples – Conservative

Area

Tutbury & Outwoods covers 2,427 hectares. This represents 6.2% of the East Staffordshire area.



2001 & 2011 Census

The Census which takes place every ten years provides the most authoritative statistics on our local population. The 2011 Census work has started but the first results from this will not be available until September 2012, and this will initially be at a local authority level. Further results will be released by the Office for National Statistics throughout 2013/14. Therefore, many of the statistics throughout this report refer to the 2001 Census.

Summary Statistics

Key statistics from 2001 Census of Population

| Actual | Tutbury & Outwoods | East Staffordshire | England & Wales |
|--|--------------------|--------------------|-----------------|
| Population | 5,260 | 103,770 | 52,041,916 |
| Total permanent households | 2,249 | 42,717 | 21,660,475 |
| Percentage | % | % | % |
| Male | 49.0 | 48.7 | 48.7 |
| Female | 51.0 | 51.3 | 51.3 |
| Ethnic minority | 1.4 | 6.1 | 8.7 |
| Religion – Christian | 81.6 | 77.4 | 71.8 |
| No Religion | 9.8 | 11.5 | 14.8 |
| Children aged 0-15 | 18.0 | 21.2 | 20.2 |
| People aged 16-74 | 74.4 | 71.7 | 72.2 |
| People aged 75+ years | 7.6 | 7.1 | 7.6 |
| Employed (of those aged 16-74) | 63.2 | 63.1 | 60.6 |
| Looking after home/family (of those aged 16-74) | 5.6 | 6.6 | 6.5 |
| Retired (of those aged 16-74) | 18.4 | 14.5 | 13.6 |
| Occupation – Manager or Senior Official | 16.8 | 15.1 | 15.1 |
| Occupation – Process, Plant or Machine Operative | 10.2 | 12.1 | 8.5 |
| Households with no car | 16.8 | 23.2 | 26.8 |
| Households with 2 or more cars | 38.8 | 32.6 | 29.4 |
| Travel to Work – by Bike or On Foot | 9.3 | 15.1 | 12.8 |
| Travel to Work – Drive a Car or Van | 65.9 | 61.8 | 55.2 |
| Residents with limiting long term illness | 16.2 | 17.1 | 18.2 |
| Residents who described their health as 'not good' | 7.0 | 7.9 | 9.2 |
| Residents who provide unpaid care | 11.0 | 10.0 | 10.0 |
| Owner occupied households | 79.9 | 75.8 | 68.9 |
| Rented from a Council or RSL | 12.1 | 14.1 | 19.2 |
| No Central Heating | 10.2 | 15.3 | 8.5 |
| Pensioner living alone | 14.4 | 14.0 | 14.4 |
| Single person households | 26.1 | 27.7 | 30.0 |
| Lone parent households | 3.9 | 5.7 | 6.5 |

Source: 2001 Census Area Statistics

Key points from the 2001 Census data show that when compared to East Staffordshire and England & Wales, Tutbury & Outwoods has:

- A significantly smaller Black & Minority Ethnic population
- A higher proportion of Christians and a lower proportion with no religion
- A lower proportion of children
- A higher proportion of people over 75 than the Borough average
- A higher proportion of residents who are employed and a higher proportion of retired residents
- A lower proportion of residents who look after the family/home
- A higher proportion of residents whose occupation is manager or senior official
- A lower proportion of process, plant or machine operatives than the Borough average
- A lower proportion of households with no car and a higher proportion with 2 or more
- A lower proportion who travel to work by bike/foot and a higher proportion who drive
- A lower proportion with a limiting long term illness and fewer residents with 'not good' health
- A higher proportion of residents who provide unpaid care
- A higher proportion of owner occupied households & fewer rented from the Council or an RSL
- A lower proportion of households without central heating than the Borough average
- A lower proportion of single person and also lone parent households

Population

The most authoritative population estimates are produced every ten years based on the Census of Population. The 2001 Census gives the population of Tutbury & Outwoods as 5,260.

Age of Resident Population in 2001 - %

| | Tutbury & Outwoods | East Staffordshire | England & Wales |
|--------------------|--------------------|--------------------|-----------------|
| Under 16 | 18.0 | 21.2 | 20.2 |
| 16 to 19 | 4.4 | 4.8 | 4.9 |
| 20 to 29 | 8.6 | 10.6 | 12.6 |
| 30 to 59 | 44.2 | 42.6 | 41.5 |
| 60 to 74 | 17.3 | 13.7 | 13.3 |
| 75 and over | 7.6 | 7.1 | 7.6 |
| Average Age | 41.7 | 38.6 | 38.6 |

Source: 2001 Census Area Statistics

The above figures are updated to produce mid year population estimates in the inter-censal period. The latest figures are for 2009 and these estimate the population of Tutbury & Outwoods to be 5,625, which is a rise of 6.9% on the 2001 Census figure.

Mid 2009 Population Estimates by Broad Age Group

| | All Ages | Children 0 - 15 | Working Age 16-64M/59F | Older People 65M/60F & over |
|--------------------|------------|--------------------|---------------------------|--------------------------------|
| Tutbury & Outwoods | 5,625 | 17.9 | 57.4 | 24.7 |
| East Staffordshire | 108,800 | 19.6 | 60.0 | 20.4 |
| Staffordshire | 828,700 | 17.9 | 60.4 | 21.7 |
| West Midlands | 5,431,100 | 19.4 | 60.6 | 20.0 |
| England | 51,809,700 | 18.7 | 61.9 | 19.3 |

Source: Office for National Statistics Crown Copyright 2010

In addition to the ward level mid year population estimates the Office for National Statistics has produced parish level mid year estimates. The latest are for 2009. Please note these are estimates.

Mid-2009 Population Estimates for Parishes

| Parish Name | Ward | All Ages | Children Aged 0 to 15 | Young People 16 to 24 | Those Aged 25 to 59 | Older People Aged 60+ |
|-------------|-------------------------------|----------|-----------------------|-----------------------|---------------------|-----------------------|
| Anslow | Tutbury & Outwoods | 815 | 146 | 73 | 388 | 208 |
| Tutbury | Tutbury & Outwoods | 3072 | 535 | 255 | 1393 | 889 |
| Outwoods | Tutbury & Outwoods & Branston | 2201 | 412 | 203 | 989 | 597 |

Source: Office for National Statistics © Crown Copyright 2011

Ethnic Group – Resident Population in 2001 - %

| | Tutbury & Outwoods | East Staffs | England & Wales |
|------------------------------------|--------------------|-------------|-----------------|
| White | 98.6 | 93.9 | 91.3 |
| Mixed | 0.4 | 0.9 | 1.3 |
| Asian or Asian British | 0.6 | 4.3 | 4.4 |
| Black or Black British | 0.2 | 0.6 | 2.2 |
| Chinese or Other Ethnic Group | 0.2 | 0.3 | 0.9 |
| Black & Minority Ethnic | 1.4 | 6.1 | 8.7 |

Source: 2001 Census Area Statistics

Religion – Resident Population - 2001

In the 2001 Census 81.6% of Tutbury & Outwoods residents stated their religion to be Christian. This is above the East Staffordshire average of 77.4% and the England & Wales average of 71.8%. 9.8% responded with 'No Religion'. This is below the East Staffordshire average of 11.5% and the England & Wales average of 14.8%. Christianity is the only major religion in Tutbury & Outwoods – all other religions account for less than 1.0% of the population each. This contrasts with the picture for the whole Borough, as Islam is the religion of 4.0% of all East Staffordshire residents. However, it is in line with the very low Black & Minority Ethnic (BME) population in Tutbury & Outwoods.

Key points from the latest population data show that when compared to East Staffordshire and England, Tutbury & Outwoods has:

- A lower percentage of children
- A lower percentage of working age residents
- A significantly higher percentage of older people
- A higher average age (2001)
- A significantly lower Black & Minority Ethnic population
- A higher percentage of Christians and a lower percentage of residents with no religion

Economic Activity

Economic Activity – Resident Population Aged 16 to 74 - %

| | Tutbury & Outwoods | East Staffs | England & Wales |
|--|--------------------|-------------|-----------------|
| Employed | 63.2 | 63.1 | 60.6 |
| Unemployed | 2.8 | 3.1 | 3.4 |
| Economically active full-time students | 2.3 | 2.1 | 2.6 |
| Retired | 18.4 | 14.5 | 13.6 |
| Economically inactive students | 2.4 | 3.1 | 4.7 |
| Looking after home/family | 5.6 | 6.6 | 6.5 |
| Permanently sick or disabled | 3.4 | 4.3 | 5.5 |
| Other economically inactive | 1.9 | 3.2 | 3.1 |

Source: 2001 Census Area Statistics

68.3% of all Tutbury & Outwoods residents aged 16 to 74 are economically active (full and part-time employed, self-employed, unemployed or economically active full-time student). This is the same as the East Staffordshire average and above the national average of 66.5%.

Key points from the 2001 Census economic activity data show that when compared to East Staffordshire and England & Wales, Tutbury & Outwoods has:

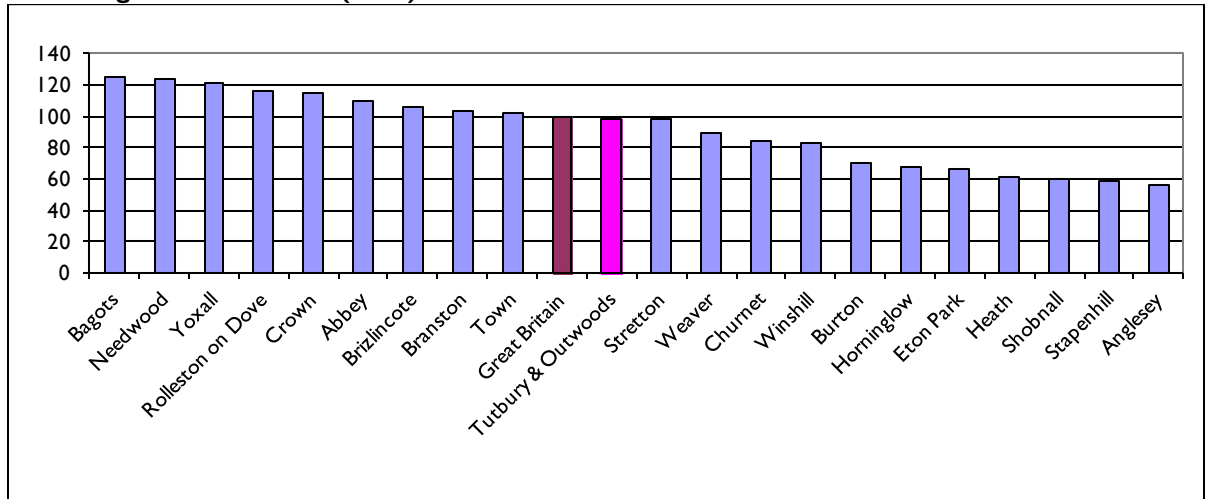
- A higher employment rate
- A higher proportion of economically active full-time students than the Borough average
- A lower proportion of economically inactive students
- A higher proportion of retired residents
- A lower proportion of those who are looking after the home/family
- A lower proportion of those who are permanently sick or disabled
- A lower 'other' economically inactive rate

Occupation Groups – Resident Population Aged 16-74 - %

| | Tutbury & Outwoods | East Staffs | England & Wales |
|-------------------------------------|-------------------------------|--------------------|----------------------------|
| Managers & Senior Officials | 16.8 | 15.1 | 15.1 |
| Professional | 9.8 | 9.4 | 11.2 |
| Associate Professional & Technical | 12.7 | 11.0 | 13.8 |
| Admin & Secretarial | 12.5 | 11.3 | 13.3 |
| Skilled Trades | 13.4 | 12.9 | 11.6 |
| Personal Service | 5.9 | 6.5 | 6.9 |
| Sales & Customer Service | 6.4 | 6.8 | 7.7 |
| Process, Plant & Machine Operatives | 10.2 | 12.1 | 8.5 |
| Elementary e.g. labourers, porters | 12.3 | 14.7 | 11.9 |

Source: 2001 Census Area Statistics

Knowledge Worker Score (2001)



Source: Local Knowledge; Census 2001

The Knowledge Worker Score is an index showing the proportion of working age residents that are employed in knowledge occupations. These occupations are based on the following SOC groups:

- 1) Managers and Senior Officials
- 2) Professional Occupations
- 3) Associate Professional and Technical Occupations

The national average is 100 – if the figure is below 100 for a ward then a lower proportion of its residents work in knowledge occupations.

Key points from the 2001 Census occupation group data show that when compared to East Staffordshire and England & Wales, Tutbury & Outwoods has:

- A higher proportion of managers & senior officials and skilled trades
- A lower proportion of personal service and sales and customer service
- A higher proportion than the Borough average of professionals, associate professional & technical and also admin & secretarial occupations
- A lower proportion than the Borough average of process, plant and machine operatives and elementary occupations
- A lower proportion of knowledge workers than the Great Britain average.

Industrial Groups – Resident Population Aged 16-74 in Employment - %

| | Tutbury & Outwoods | East Staffordshire | England & Wales |
|--|--------------------|--------------------|-----------------|
| Agriculture; Hunting; Forestry & Fishing | 2.7 | 2.1 | 1.5 |
| Mining & Quarrying | 0.3 | 0.3 | 0.3 |
| Manufacturing | 21.6 | 22.7 | 15.0 |
| Electricity; Gas & Water Supply | 0.8 | 0.8 | 0.7 |
| Construction | 7.4 | 7.0 | 6.8 |
| Wholesale & Retail Trade; Repair of Motor Vehicles | 17.0 | 17.3 | 16.8 |
| Hotels & Restaurants | 4.9 | 4.9 | 4.8 |
| Transport; Storage & Communication | 5.9 | 6.5 | 7.0 |
| Financial Intermediation | 2.2 | 1.9 | 4.7 |
| Real estate; Renting & Business Activities | 10.0 | 10.4 | 13.0 |
| Public Administration & Defence; Social Security | 4.5 | 3.5 | 5.7 |
| Education | 7.2 | 7.5 | 7.8 |
| Health & Social Work | 12.0 | 10.5 | 10.8 |
| Other | 3.5 | 4.5 | 5.2 |

Source: 2001 Census Area Statistics

Key points from the 2001 Census Industry data show that when compared to East Staffordshire and England & Wales, Tutbury & Outwoods has:

- A higher proportion of residents employed in agriculture, hunting, forestry & fishing, construction and health & social work.
- A lower proportion in transport, storage & communications, real estate, renting & business activities, education and other.

Travel to Work Methods – All People Aged 16-74 in Employment - %

| | Tutbury & Outwoods | East Staffs | England & Wales |
|--------------------------------------|--------------------|-------------|-----------------|
| Work from home | 10.5 | 9.6 | 9.2 |
| Underground; metro; light rail; Tram | 0.0 | 0.0 | 3.0 |
| Train | 0.9 | 0.8 | 4.1 |
| Bus; Mini Bus or coach | 4.5 | 3.7 | 7.4 |
| Motorcycle; Scooter; moped | 1.3 | 1.0 | 1.1 |
| Driving a car or van | 65.9 | 61.8 | 55.2 |
| Passenger in a car or van | 6.7 | 7.1 | 6.3 |
| Taxi or minicab | 0.4 | 0.6 | 0.5 |
| Bicycle | 2.1 | 4.1 | 2.8 |
| On foot | 7.2 | 11.0 | 10.0 |
| Other | 0.5 | 0.4 | 0.5 |

Source: 2001 Census Area Statistics

Key points from the 2001 Census Travel to Work data show that when compared to East Staffordshire and England & Wales, Tutbury & Outwoods has:

- A higher proportion of residents who work from home
- A higher proportion of residents than the Borough average who travel by bus
- A higher proportion of residents who drive to work
- A lower proportion of residents than the Borough average who are passengers in a car/van
- A lower proportion of residents who use a bicycle
- A lower proportion who travel on foot

Number of Employees & Proportion of Full-time & Part-time Employment – 2009

| | Number of Employees | % Full time | % Part time |
|--------------------|---------------------|-------------|-------------|
| Tutbury & Outwoods | 1,100 | 61.9 | 38.1 |
| East Staffordshire | 53,000 | 70.3 | 29.7 |
| Staffordshire | 309,300 | 68.0 | 32.0 |
| England & Wales | 23,823,600 | 67.9 | 32.1 |

Source: Business Register and Employment Survey 2009 (Figures are rounded to nearest 100)

These figures exclude farm agriculture

Key points from the 2009 Employment Survey data show that when compared to the East Staffordshire average, Tutbury & Outwoods has:

- A much lower proportion of full-time employees
- A much higher proportion of part-time employees

Unemployment

| April 2011 | Tutbury & Outwoods | East Staffordshire | Staffordshire | England |
|---------------------------------|--------------------|--------------------|---------------|---------|
| Total unemployed - % | 1.3 | 2.9 | 2.8 | 3.7 |
| Of which: | | | | |
| % aged under 25 | 22.2 | 31.1 | 31.7 | 28.2 |
| % unemployed for over 12 months | 2.2 | 8.2 | 11.4 | 14.0 |

Source: Nomis – Claimant Count

Key points from the unemployment data show that when compared to Staffordshire and East Staffordshire, Tutbury & Outwoods has:

- A lower unemployment rate
- A lower youth unemployment proportion
- A lower long-term unemployment proportion

Education

Key Stage 2 Test Results in 2010 - %

| Key Stage 2 Results | Both English & Maths | English | Maths | Average Point Score |
|---------------------------------|----------------------|---------|-------|---------------------|
| 2010 | % | | % | |
| Mosley County Primary | Boycott school | | | |
| Richard Wakefield CE(C) Primary | Boycott school | | | |
| Staffordshire Average | 74 | 81 | 81 | 27.6 |
| England Average | 73 | 80 | 79 | 27.5 |

The table shows the percentage of eligible pupils achieving Level 4 or above in each subject. Level 4 is the level expected of most 11 year olds.

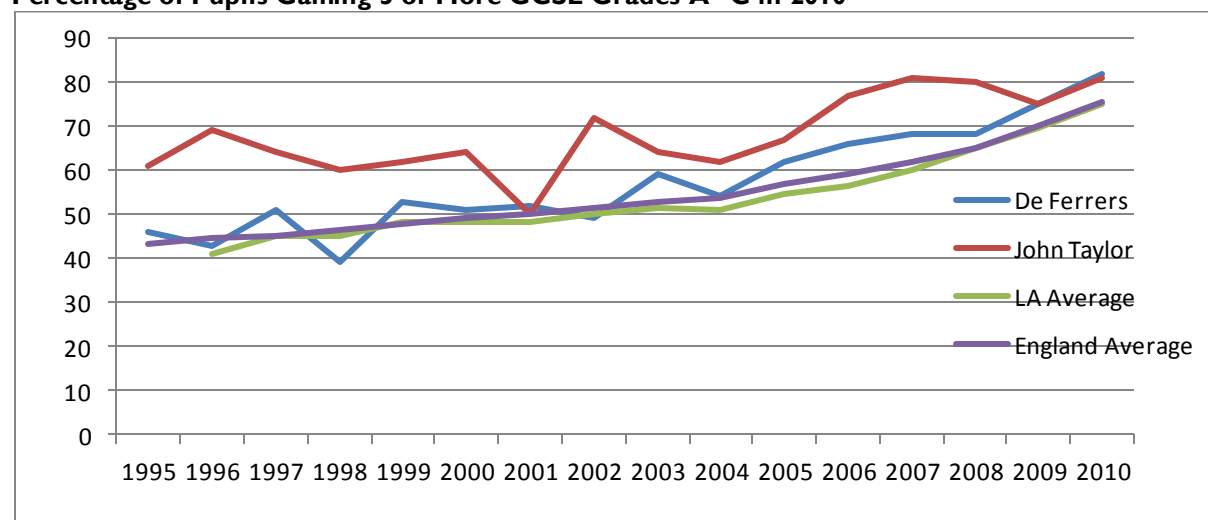
Source: DfES

School Absence Statistics - 2010

| School performance tables - 2010 | Number of Pupils (all ages) | Overall absence | Unauthorised absence | Persistent absence |
|--|-----------------------------|-----------------------------|----------------------|--------------------|
| Local Authority Average | | 6.7% | 0.8% | 4.1% |
| England (all schools) | | 6.9% | 1.4% | 4.6% |
| Abbot Beyne School | 851 | 6.1% | 0.4% | 3.2% |
| Abbots Bromley School for Girls | 254 | Absence return not required | | |
| Blessed Robert Sutton Catholic College | 685 | 7.4% | 1.6% | 5.1% |
| De Ferrers Specialist Technology College | 1916 | 6.3% | 0.5% | 4.0% |
| Denstone College | 577 | Absence return not required | | |
| John Taylor High School | 1479 | 4.7% | 0.3% | 2.0% |
| Paget High School | 1003 | 7.7% | 0.8% | 5.8% |
| Paulet High School | 696 | 6.7% | 0.9% | 5.3% |
| Thomas Alleyne's High School | 1346 | 7.2% | 1.6% | 6.2% |

Source: DfES

Percentage of Pupils Gaining 5 or More GCSE Grades A*-C in 2010



Source: DfES

Percentage of Pupils With 5+ GCSE's Grades A* - C Including English & Maths

| % of pupils at the end of Key Stage 4 achieving 5+A*-C (and equivalent) including English and Maths GCSEs | 2007 | 2008 | 2009 | 2010 |
|---|-------|-------|-------|-------|
| Local Authority | 45.7% | 49.7% | 50.8% | 54.0% |
| England (state funded schools only) | 45.6% | 48.2% | 50.7% | 55.2% |
| England (all schools) | 46.3% | 47.6% | 49.8% | 53.4% |
| Abbot Beyne School | 38% | 34% | 41% | 42% |
| Abbots Bromley School for Girls | 100% | 71% | 75% | 89% |
| Blessed Robert Sutton Catholic Sports College | 64% | 52% | 47% | 62% |
| De Ferrers Specialist Technology College | 48% | 55% | 55% | 55% |
| Denstone College | 94% | 90% | 79% | 86% |
| John Taylor High School | 69% | 77% | 71% | 72% |
| Paget High School | 36% | 37% | 40% | 42% |
| Paulet High School | 23% | 30% | 34% | 60% |
| Thomas Alleyne's High School | 60% | 58% | 49% | 58% |

Source: DfES

School Leaver Activity Survey in 2010 - %

| | Sub-total: Continuing with structured learning % | Continued full-time education % | Structured learning in the workplace % | Jobs with no structured training % | Not yet settled in any full- time positive activity % | Failed to respond or moved away % |
|--|--|--|--|---|--|--|
| De Ferrers – 334 school leavers | | | | | | |
| On leaving Y11 in 2009 | 91.6 | 85.6 | 6.0 | 1.5 | 6.3 | 0.6 |
| % point change | -4.8 | -10.7 | 6.0 | 0.9 | 1.2 | 2.7 |
| One year on in 2010 | 86.8 | 74.9 | 12.0 | 2.4 | 7.5 | 3.3 |
| John Taylor – 222 school leavers | | | | | | |
| On leaving Y11 in 2009 | 97.3 | 92.8 | 4.5 | 0.5 | 1.8 | 0.5 |
| % point change | -6.8 | -9.5 | 2.7 | 1.8 | 1.4 | 3.6 |
| One year on in 2010 | 90.5 | 83.3 | 7.2 | 2.3 | 3.2 | 4.1 |
| East Staffordshire – 1546 school leavers | | | | | | |
| On leaving Y11 in 2009 | 92.2 | 85.0 | 7.2 | 1.4 | 5.6 | 0.8 |
| % point change | -5.9 | -11.6 | 5.7 | 1.2 | 1.8 | 2.9 |
| One year on in 2010 | 86.3 | 73.4 | 12.9 | 2.6 | 7.4 | 3.7 |
| Staffordshire Local Authority Average – 10,149 school leavers | | | | | | |
| On leaving Y11 in 2009 | 94.9 | 87.2 | 7.7 | 0.8 | 3.7 | 0.6 |
| % point change | -7.6 | -12.1 | 4.5 | 1.3 | 2.5 | 3.8 |
| One year on in 2010 | 87.3 | 75.1 | 12.2 | 2.1 | 6.2 | 4.4 |

Source: Connexions Staffordshire Ltd

Post 16 Education – Average point score - (including A* grade in 2010)

| | Average point score per student | | | Average point score per exam | | |
|---|------------------------------------|-------|-------|---------------------------------|-------|-------|
| | 2008 | 2009 | 2010 | 2008 | 2009 | 2010 |
| Local Authority Average | 693.7 | 707.5 | 699.1 | 198.4 | 203.2 | 206.4 |
| England Average (excluding independent) | 721.3 | 721.3 | 726.6 | 205.8 | 208.3 | 211.1 |
| Abbot Beyne School | 769.9 | 686.1 | 750.6 | 209.1 | 195.4 | 213.2 |
| Abbots Bromley School for Girls | 792 | 783.6 | 859.3 | 231.6 | 222.4 | 230.5 |
| Blessed Robert Sutton Catholic Sports College | 462.2 | 695.8 | 569.6 | 168.1 | 205.7 | 173.7 |
| Burton College - Burton on Trent | 563.5 | 614.1 | 584.3 | 212.8 | 213.1 | 213.1 |
| De Ferrers Specialist Technology College | 760.7 | 798.4 | 843.5 | 188 | 189 | 189.5 |
| Denstone College | 757.2 | 821.9 | 777 | 228.8 | 231.7 | 236.9 |
| John Taylor High School | 770.3 | 779.3 | 855.8 | 192 | 205.9 | 222 |
| Paget High School | 599.7 | 602.7 | 500.8 | 185.8 | 183.5 | 181.2 |
| Paulet High School | 435 | 507.3 | 643.8 | 153.5 | 167.2 | 191.6 |
| Thomas Alleyne's High School | 715.3 | 709.7 | 710.5 | 208.5 | 203 | 199.4 |

Source: DfES

Percentage in Receipt of Free School Meals – October 2010

| Primary Schools | % | Middle & Secondary Schools | % |
|----------------------------------|------|----------------------------|------|
| Mosley Primary | 6.4 | John Taylor High | 2.9 |
| Richard Wakefield C of E Primary | 13.4 | De Ferrers High | 10.1 |
| William Hutson | ? | | |
| Castle Park Infants | ? | | |
| East Staffordshire | 14.5 | East Staffordshire | 8.7 |
| Staffordshire | 13.3 | Staffordshire | 9.4 |

Source: Staffordshire LEA

The School Census summaries, at a ward level, some of the information set out above. It is collected by Staffordshire County Council and covers nursery, primary, middle, secondary and special schools in the maintained sector in Staffordshire. It includes information on pupils by gender, free school meal eligibility, ethnicity, special educational needs, travel to school methods and gifted and talented status.

School Census 2010

| 2010 | Tutbury & Outwoods | East Staffordshire | Staffordshire |
|---|--------------------|--------------------|---------------|
| % of pupils who are girls | 49.0 | 48.8 | 48.8 |
| % of pupils who are boys | 51.0 | 51.2 | 51.2 |
| % of BME pupils | 6.9 | 18.6 | 7.2 |
| % who have Free School Meals | 6.7 | 13.4 | 12.4 |
| % of pupils subject to School Action | 10.2 | 12.8 | 10.6 |
| % of pupils subject to School Action Plus | 2.8 | 12.8 | 10.6 |
| % of pupils who have a SEN Statement | 1.6 | 2.3 | 2.7 |
| % of pupils who are subject to School Action Plus or have a SEN Statement | 4.4 | 6.6 | 7.6 |
| % of pupils travelling to school by car/van | 25.5 | 23.7 | 27.7 |
| % of pupils travelling to school by bus | 1.7 | 1.9 | 2.4 |
| % of pupils walking to school | 40.0 | 58.1 | 54.8 |
| % of Pupils who are Gifted or Talented | 11.8 | 10.3 | 10.4 |

Source: Staffordshire Observatory/Staffordshire County Council

Qualifications Held by Resident Population Aged 16-74 in 2001 - %

| | Tutbury & Outwoods | East Staffs | England & Wales |
|-------------------------------------|--------------------|-------------|-----------------|
| Had no qualifications | 29.1 | 31.8 | 29.1 |
| Qualified to degree level or higher | 18.5 | 16.0 | 19.8 |

Source: 2001 Census Area Statistics

Key points from the schools data show that when compared to Staffordshire LEA and England averages, schools in and around Tutbury & Outwoods have:

- No Key Stage 2 results (boycott school)
- A lower level of absence
- A higher percentage of eligible pupils achieving 5 or more GCSEs at grades A-C
- A higher percentage of eligible pupils achieving 5 or more GCSEs at grades A-C that includes English & Maths at John Taylor. De Ferrers' success rate is similar to the national average
- A higher percentage of school leavers continuing with structured learning in 2010 at John Taylor and a similar percentage to the Borough average at de Ferrers
- A higher percentage of school leavers not yet settled in any full-time positive activity in 2010 at de Ferrers but a lower percentage at John Taylor
- A higher average point score per student at GCE (post 16) level and a higher average point score per exam entry at John Taylor
- A lower percentage of pupils receiving free school meals at some of the primary and secondary schools but a higher percentage at others

Key points from the Census show that when compared to East Staffordshire and England & Wales averages, residents in Tutbury & Outwoods have:

- A lower proportion of residents with no qualifications than the Borough average
- A higher proportion of residents qualified to degree level or above than the Borough average

Key points from the 2010 School Census show that when compared to East Staffordshire averages, pupils in Tutbury & Outwoods are:

- Less likely to be of a BME origin
- Less likely to have free school meals
- Less likely to be subject to School Action or School Action Plus
- Less likely to have a SEN statement
- More likely to travel to school by car
- Less likely to walk to school
- More likely to be termed gifted or talented.

Health

Key Health Comparators - %

| 2001 Census Area Statistics | Tutbury & Outwoods | East Staffs | England & Wales |
|---|--------------------|-------------|-----------------|
| Residents with limiting long-term illness (2001) | 16.2 | 17.1 | 18.2 |
| Residents who described their health as 'Good' | 70.1 | 69.4 | 68.6 |
| Residents who described their health as 'Fairly Good' | 22.8 | 22.6 | 22.2 |
| Residents who described their health as 'Not Good' | 7.0 | 7.9 | 9.2 |
| Residents who provide unpaid care | 11.0 | 10.0 | 10.0 |

Source: 2001 Census Area Statistics

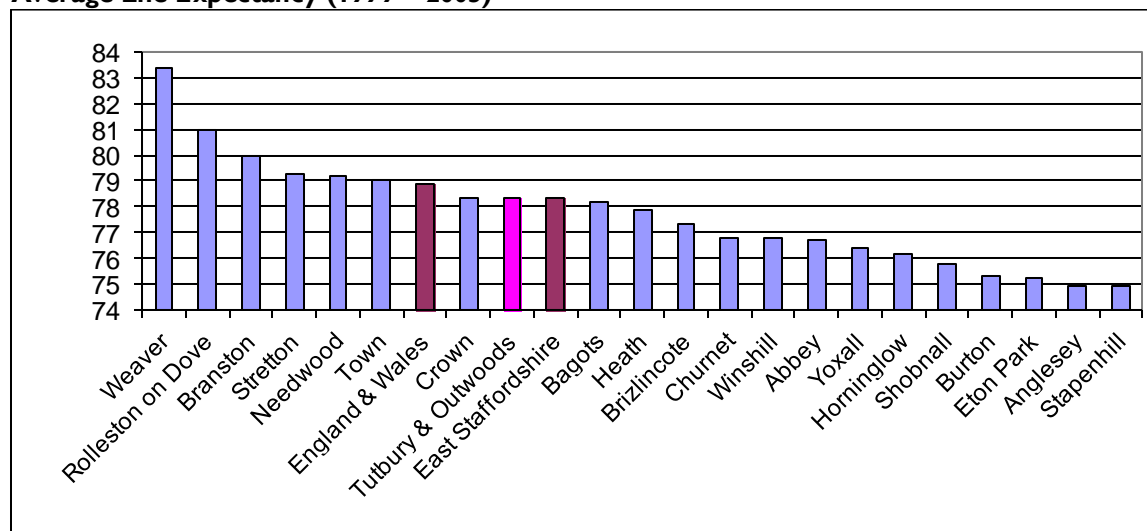
Health Lifestyle Behaviours – 2000/2002

| | Tutbury & Outwoods | East Staffordshire | England |
|---|--------------------|--------------------|---------|
| Proportion of Residents who Binge Drink | 15.1 | 16.2 | 16.5 |
| Proportion of Residents who are Obese | 24.0 | 23.8 | 20.5 |
| Proportion of Residents who Smoke | 19.5 | 24.6 | 24.2 |
| Proportion of Adult Residents who eat 5+ Fruit & Vegetable Portions per day | 25.5 | 23.6 | 22.2 |
| Proportion of Child Residents who eat 3+ Fruit & Vegetable Portions per day | 32.3 | 32.8 | 35.1 |

The data for this indicator is part of a data modelling exercise carried out based on the Health Survey of England. Results are based on 3 year sample data of 16,000 adults and 4,000 children each year. The figures should not be used as actual figures but rather should be viewed as expected levels based on the socio-demographic characteristics of the area.

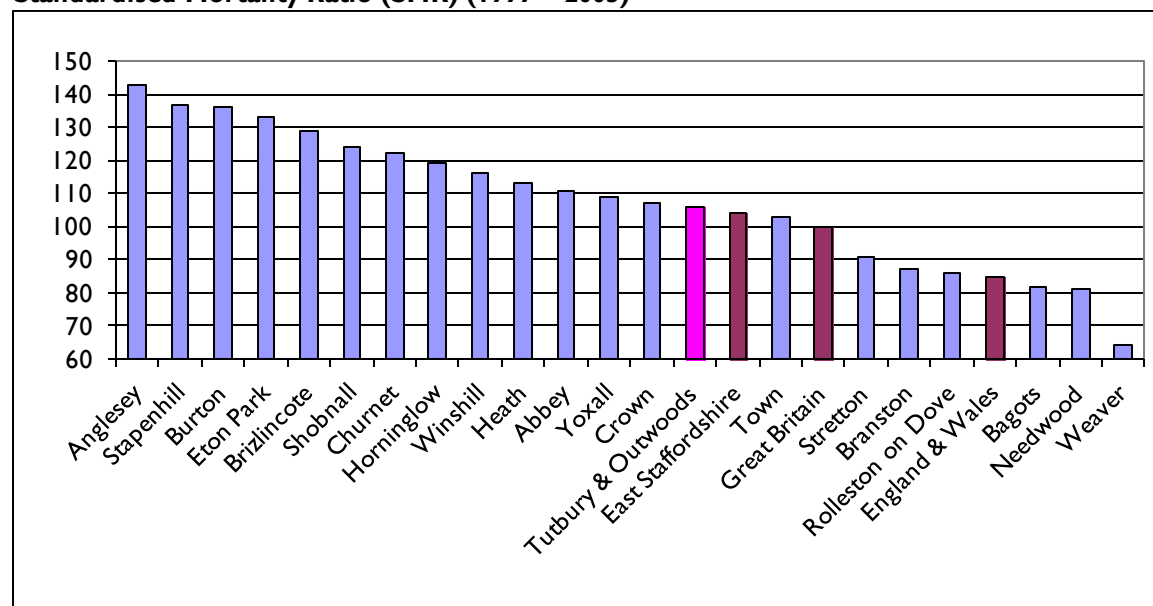
Source: Local Knowledge: Synthetic Health Indicators for Health Lifestyle Behaviours

Average Life Expectancy (1999 – 2003)



Source: Local Knowledge; Life Expectancy at Birth

Standardised Mortality Ratio (SMR) (1999 – 2003)



Source: Local Knowledge; Standardised Mortality Ratios

The Standardised Mortality Ratio compares overall mortality in a locality with that for the UK as a whole. The ratio expresses the number of deaths in a locality as a percentage of the hypothetical number that would have occurred if the local population had experienced the sex/age specific rates of the UK in that year. The lower the figure, the lower the relative mortality.

In the table below the Health Intelligence and Clinical Evidence Team, Staffordshire Public Health have summarised some of the key health indicators. Those shaded red are statistically worse than the England average and those shaded green are statistically better. The following measurements are statistically better for those living in Tutbury & Outwoods:

- Premature mortality from circulatory diseases (rate per 100,000 people aged under 75)
- Percentage of population with a self reported limiting long term illness (2001)
- Smoking prevalence - adults (Mosaic estimates)
- % of adult population eating five or more portions of fruit or vegetables a day
- Percentage of adult population doing no exercise in the last month.

Summary of Key Health Indicators

| | Tutbury & Outwoods | East Staffs |
|--|--------------------|-------------|
| Percentage of births with a low birthweight (under 2,500 grams) (2004/08) | 4.7% | 9.1% |
| Life expectancy at birth for males (years) (2004/08) | 77.0 | 76.9 |
| Life expectancy at birth for females (years) (2004/08) | 81.0 | 81.1 |
| All-age all cause mortality rate per 100,000 population (2004/08) | 656 | 626 |
| Premature mortality (rate per 100,000 population aged under 75) (2004/08) | 268 | 306 |
| Premature mortality from circulatory diseases (rate per 100,000 people aged under 75) (2004/08) | 50 | 80 |
| Premature mortality from cancers (rate per 100,000 people aged under 75) (2004/08) | 117 | 113 |
| Mental Illness Needs Index (MINI) (rate per 100,000 population) (2000) | 248 | 350 |
| Percentage of population with a self reported limiting long term illness (2001) | 16% | 17% |
| Smoking prevalence - adults (Mosaic estimates) (2009) | 21% | 25% |
| Obesity prevalence - adults (Mosaic estimates) (2009) | 17% | 17% |
| Percentage of adult population eating five or more portions of fruit or vegetables a day (Mosaic estimates) (2009) | 26% | 24% |
| Percentage of adult population doing no exercise in the last month (Mosaic estimates) (2009) | 49% | 51% |

Source: Health Intelligence and Clinical Evidence Team, Staffordshire Public Health

Key points from the 2001 Census show that when compared to the East Staffordshire and England & Wales averages Tutbury & Outwoods has:

- A lower proportion with a limiting long-term illness
- A lower proportion whose health is 'Not Good'
- A higher proportion of residents who provide unpaid care

Key points from the Synthetic Health Indicators for Health Lifestyle Behaviours Survey show that when compared to the national averages Tutbury & Outwoods is thought to have (based on a sample survey):

- A lower proportion of residents who binge drink and who smoke but a lower proportion who are obese
- A higher proportion of adults that eat 5 or more portions of fruit and vegetables a day but a lower proportion of children who eat 3 or more portions per day

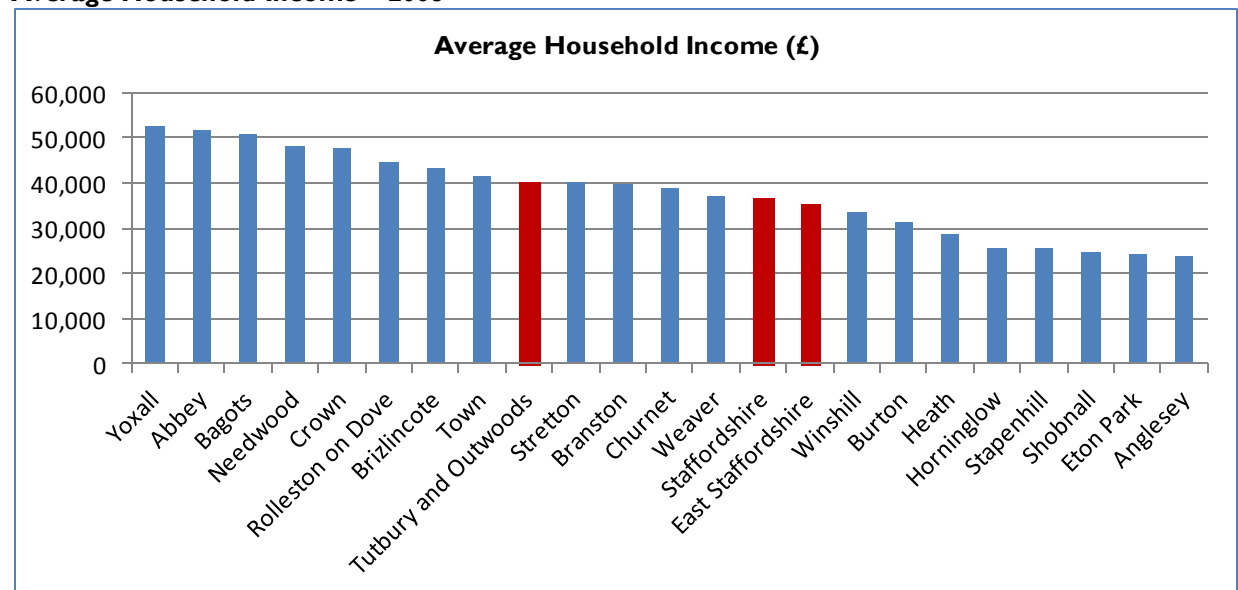
Key points from the 1999 – 2003 life expectancy and standardised mortality ratio data show that when compared to the national average Tutbury & Outwoods has:

- A lower than average life expectancy
- A higher than average SMR

Income

The average household income across East Staffordshire in 2008 was £35,500, which is slightly below the Staffordshire average of £36,800. However, across Tutbury & Outwoods the average household income in 2008 was £40,300, which is above the Borough and County figures.

Average Household Income – 2008



Source: Acxiom IncomeX

DWP Benefit Claimants – Working Age Clients – May 2010

| Proportion of resident population aged 16-64 claiming benefits | | | |
|--|--------------------|--------------------|---------------|
| % | Tutbury & Outwoods | East Staffordshire | Great Britain |
| Total claimants | 8.7 | 13.3 | 14.7 |
| Job seekers | 1.1 | 3 | 3.5 |
| ESA and incapacity benefits | 4.3 | 6 | 6.7 |
| Lone parents | 1.0 | 1.5 | 1.7 |
| Carers | 1.0 | 1.1 | 1.1 |
| Others on income related benefits | 0.3 | 0.5 | 0.5 |
| Disabled | 0.8 | 1 | 1 |
| Bereaved | 0.3 | 0.3 | 0.2 |

Source: DWP Benefit Data – Nomis

Key points from the income data show that when compared to East Staffordshire, Tutbury & Outwoods has:

- An average household income of £40,300, which is above the East Staffordshire average (£35,500)
- A lower proportion of total benefit claimants
- A lower proportion claiming each individual benefit, with the exception of Bereavement Allowance.

Housing

At the time of the 2001 Census there were 2,249 household spaces with residents in Tutbury & Outwoods. There was also an additional 81 household spaces without residents, making a total of 2,330 household spaces in Tutbury & Outwoods in April 2001.

Households – 2001 Census Findings - %

| | Tutbury & Outwoods | East Staffs | England & Wales |
|--|--------------------|-------------|-----------------|
| One person households | 26.1 | 27.7 | 30.0 |
| Pensioner living alone | 14.4 | 14.0 | 14.4 |
| Other all pensioner households | 12.1 | 9.6 | 9.4 |
| Contained dependent children | 26.8 | 31.0 | 29.5 |
| Lone parent households with dependent children | 3.9 | 5.7 | 6.5 |
| Owner occupied | 79.9 | 75.8 | 68.9 |
| Rented from Council | 6.9 | 8.1 | 13.2 |
| Rented from Housing Association or RSL | 5.2 | 6.0 | 6.0 |
| Private rented or lived rent free | 8.0 | 10.2 | 11.9 |
| Without central heating | 10.2 | 15.3 | 8.5 |
| Without sole use of bath, shower or toilet | 0.1 | 0.3 | 0.5 |
| Have no car or van | 16.8 | 23.2 | 26.8 |
| Have 2 or more cars or vans | 38.8 | 32.6 | 29.4 |
| Average household size (number) | 2.3 | 2.4 | 2.4 |
| Average number of rooms per household | 5.7 | 5.7 | 5.3 |

Source: 2001 Census Area Statistics

Key points from the housing data show that when compared to East Staffordshire, households in Tutbury & Outwoods are:

- Less likely to be single person households, lone parent households and households containing dependent children
- More likely to be all pensioner households
- More likely to be owner occupied
- Less likely to be rented from the Council or an RSL or be private rented/living rent free
- Less likely to be without central heating than the Borough average
- Less likely to have no car or van and more likely to have 2 or more cars or vans
- More likely to be smaller in terms of the number of people
- More likely to be larger than the national average in terms of the number of rooms

Households – 2001 Census – Accommodation Type - %

| | Tutbury & Outwoods | East Staffs | England & Wales |
|---|--------------------|-------------|-----------------|
| Percentage living in a detached house | 46.2 | 31.7 | 22.8 |
| Percentage living in a semi-detached house | 30.3 | 32.8 | 31.6 |
| Percentage living in a terraced house | 16.7 | 25.7 | 26.0 |
| Percentage living in a flat or maisonette | 6.7 | 9.4 | 19.2 |
| Percentage living in a caravan or mobile home | 0.0 | 0.4 | 0.4 |

Source: 2001 Census Area Statistics

Key points from the 2001 Census show that when compared to East Staffordshire, households in Tutbury & Outwoods are:

- Significantly more likely to be in a detached house
- Less likely to be in a semi-detached house
- Significantly less likely to be in a terraced house
- Significantly less likely to be in a flat or maisonette
- Less likely to be in a caravan or mobile home

Private Sector House Condition Survey 2008

The 2008 House Condition Survey was distributed to a random sample of 1,250 private sector households and entailed full internal and external surveys plus supporting interviews with the occupying households. At the time of the survey there were 41,968 private dwellings, 38,849 of which were occupied (92.6%) and 3,119 (7.4%) were vacant. Of these 14,048 households (36.2%) are elderly and 12,464 households are economically vulnerable (32.1%). There is a mixed age profile with 16,596 dwellings (39.5%) constructed pre-1945 and 11,434 dwellings (27.2%) constructed pre-1919.

Housing conditions in the Borough are better than the national average for private housing; however, housing condition problems remain significant:

- 13,445 dwellings (32.0%) are non-decent
- 8,137 dwellings (19.4%) exhibit Category I hazards

| | Category I Hazards | Non-decent Homes | Decent homes Energy Failure Rates | Fuel Poverty |
|--|--------------------|------------------|-----------------------------------|--------------|
| Burton & Horninglow | 30.3 | 50.3 | 25.9 | 39.2 |
| Inner Burton (Anglesey, Eton Park and Shobnall) | 29.9 | 39.9 | 18.8 | 41.7 |
| Rural North (Abbey, Churnet & Weaver) | 23.9 | 31.3 | 22.5 | 33.6 |
| Rural South (Bagots, Crown, Needwood, Rolleston on Dove, Tutbury & Outwoods, Yoxall) | 21.0 | 39.5 | 26.9 | 44.6 |
| Winshill & Stapenhill | 14.5 | 23.5 | 12.3 | 32.9 |
| Uttoxeter (Heath & Town) | 12.0 | 22.8 | 9.6 | 27.2 |
| Outer Burton (Branston, Brizlincote and Stretton) | 8.4 | 18.5 | 11.1 | 27.2 |
| Borough Average | 19.4 | 32.0 | 18.1 | 35.5 |

Category I hazards

These include falls on steps/stairs, excess cold, dampness/mould and crowding/space. Category I hazards are not evenly distributed across the Borough but are higher across the Inner Burton and Burton/Horninglow areas

Non-decent homes

The most common reasons for failing the Decent Homes Standard relate to energy efficiency and Category I hazards. Patterns of non-decent housing are similar to those for Category I hazards with higher rates for the Inner Burton and Burton/Horninglow areas. Rates of non decency are also higher in the Rural South. Poor housing conditions within the Borough are associated with households in social and economic disadvantage. A significant proportion of households living in non-decent homes are made up of the elderly (36.2%) and the economically vulnerable (48.8%).

Home energy efficiency

The home energy efficiency rates in private housing in the Borough are above the national average. East Staffordshire has an average SAP Rating of 56 compared to an average of 47 for all private housing in England. 7,585 dwellings fail the Decent Homes energy requirements representing 18.1% of all private dwellings.

Fuel Poverty

13,805 households in the Borough (35.5%) are in Fuel Poverty. The highest rates of fuel poverty are associated with Inner Burton and the Rural South. Rates of fuel poverty are also higher for households in pre-war housing, terraced housing and converted flats. Households most affected include young single households, single parent families and the elderly.

Key points from the 2008 House Condition Survey show that when compared to the East Staffordshire average, private housing stock in the Rural South is:

- More likely to exhibit Category I Hazards
- More likely to be non-decent
- More likely to fail the Decent Homes Energy Rating
- More likely to be in Fuel Poverty

Register of Electors 2010

The table below shows a count of the number of properties at the time of the 2010 Register of Electors. It shows a total of 2,611 properties in Tutbury & Outwoods ward, which is an increase of 12.1% on the 2001 Census figure. This is above the East Staffordshire increase of 10.4%. There are obviously differences in the way the information is produced but it gives an indication of the change in the number of properties during this period.

| Electoral Area | Properties | % of Total | Void Properties | Void % of Props |
|-------------------------------|--------------|------------|-----------------|-----------------|
| BV - Anslow | 328 | 13% | 12 | 4% |
| BW - Outwoods North | 114 | 4% | 5 | 4% |
| BX - Outwoods North | 631 | 24% | 23 | 4% |
| BY - Tutbury | 1,538 | 59% | 104 | 7% |
| Tutbury & Outwoods | 2,611 | 5% | 144 | 6% |
| East Staffordshire | 49,048 | 100% | 3,385 | 7% |

Source: Register of Electors 2010

Fire Service Arson Returns 2008-2009

| Tutbury & Outwoods | % | Number |
|--------------------------------------|-------|--------|
| Arson incidents | 6.1 | 12 |
| Malicious false Alarms: Attended | 0.0 | 0 |
| Malicious false Alarms: Not attended | 4.3 | 1 |
| Primary fires | 0.0 | 0 |
| Accidental dwelling fires | 0.0 | 0 |
| Deliberate vehicle fires | 6.1 | 2 |
| Deliberate other fires | 100.0 | 1 |
| Deliberate grass fires | 0.0 | 0 |

Source: Staffordshire Fire Service

Index of Local Deprivation 2010

The Indices of Deprivation 2010 (ID 2010) is a measure of multiple deprivation at a small area level. The small geographical areas the ID 2010 is based upon are called Lower Layer Super Output Areas (LSOA's) and each account for between 1,000 and 3,000 people. The purpose of basing the Indices upon LSOA's is to pinpoint small areas of deprivation that may otherwise be hidden within larger wards. The ID 2010 consists of an overall measure of deprivation and seven specific aspects – Income, Employment, Health and Disability, Education, Skills and Training, Barriers to Housing and Services, Living Environment and also Crime.

There are 32,482 LSOA's in England and four of these are located within Tutbury & Outwoods ward. Below is a summary of the key points arising from the ID 2010 for Tutbury & Outwoods' LSOA's. If the LSOAs fall within the top 10% or top 20% most deprived they are considered here to be deprived:

- **Overall Deprivation:** There are four LSOAs within Tutbury & Outwoods. Two have seen a deterioration in their ranking since 2007 but none of them are deprived. In fact one is within the top 10% least deprived areas of England.
- **Income Deprivation:** None of the LSOAs experience income deprivation and in fact one falls within the top 2% least deprived and a second within the top 20% least deprived in terms of income deprivation.
- **Employment Deprivation:** None of the LSOAs experience employment deprivation and two fall within the top 20% least deprived.
- **Health & Disability Deprivation** None of the LSOAs are deprived.
- **Education, skills and training deprivation:** None of the LSOAs experience education, skills and training deprivation according to the criteria above. However, there is considerable variation across the ward and one LSOA falls just outside the top 20% most deprived, whereas one falls within the top 20% least deprived.
- **Barriers to housing and services deprivation:** Again there is considerable variation across the ward. One LSOA falls within the **top 10% most deprived** LSOAs in England in terms of barriers to housing and services, whereas, two of the LSOAs fall within the top 20% least deprived in England.
- **Crime Deprivation:** Tutbury & Outwoods does not experience crime deprivation and one of its LSOAs falls within the top 20% least deprived.
- **Living environment deprivation:** Overall the ward does not experience deprivation in terms of its living environment, however, one of the LSOAs falls within the top 25% most deprived.

Tutbury & Outwoods ward is not deprived according to the majority of the measurements outlined above. However one of its LSOAs is deprived in terms of barriers to housing and services.

Place Survey 2008 – 2009

All local authorities are required to undertake a Place Survey containing a standard set of questions which are designed to capture local people's views, experiences and perceptions. The aim is to use the findings to ensure that improvements for an area reflect local views and preferences. A random sample of 3,000 residents (aged 18 and over) were selected and 1,134 responses were received – a response rate of 38%. The findings set out below were calculated as a proportion of respondents who answered each question and exclude those who did not reply. The tables include a column for ranking within East Staffordshire, with a ranking of 1 being the most satisfied and 21 being the least satisfied.

The Local Area

Respondents were asked to select five factors they felt were most important in making somewhere a good place to live and they were then asked to select the five that were most in need of improvement in their local area. The results for East Staffordshire as a whole are set out below:

| Most important | Most in need of improvement |
|---------------------------------|-----------------------------------|
| The level of crime (65%) | Activities for teenagers (47%) |
| Clean streets (45%) | Level of traffic congestion (37%) |
| Health services (41%) | Road and pavement repairs (31%) |
| Affordable decent housing (36%) | The level of crime (26%) |
| Education provision (28%) | Public transport (25%) |

Only one factor (the level of crime) is thought to be both important and in need of improvement which suggest the Council and its partners are performing well in the areas considered to be the most important to the local residents.

Respondents were asked how satisfied or dissatisfied they are with their local area as a place to live. In Tutbury & Outwoods 88% of respondents were very/fairly satisfied, which is above the Borough average (79%). The survey found that older respondents were more likely to be satisfied with their local area than younger respondents, which fits with the age structure of the ward. Tutbury & Outwoods has a higher proportion of residents of pensionable age than the Borough average.

Respondents were asked how satisfied or dissatisfied they are with their home as a place to live. In Tutbury & Outwoods 93% of respondents were very/fairly satisfied which is above the Borough average (90%). The survey found that home owners were more likely to be satisfied with their home than those who were renting. Tutbury & Outwoods has a higher proportion of home owners than the Borough average (2001 Census).

Respondents were asked how strongly they feel they belong to their immediate neighbourhood. In Tutbury & Outwoods 64% of respondents feel they very/fairly strongly belong which is above the Borough average (61%). The survey found that older respondents (65+) were more likely to feel they belong to their immediate neighbourhood and those who rent privately were less likely to feel so.

| % of respondents who are: | Tutbury & Outwoods | East Staffordshire | Comparison with East Staffordshire | Rank within East Staffordshire | England Average | Comparison with England |
|---|--------------------|--------------------|------------------------------------|--------------------------------|-----------------|-------------------------|
| Satisfied with local area | 88 | 79 | ↑ | 8 | 80 | ↑ |
| Satisfied with home as a place to live | 93 | 90 | ↑ | 6 (joint) | N/A | N/A |
| Feel they belong to immediate neighbourhood | 64 | 61 | ↑ | 9 | 59 | ↑ |

Local Public Services

This section covers perceptions of and satisfaction with local public services. Generally older respondents were more positive than younger respondents. There are a wide range of factors that may affect how people feel about their local authority and its services, such as demographic characteristics, how informed people are, and views on participation and local decision making.

In Tutbury & Outwoods the respondents are more likely to agree that local public services are:

- Working to make the area cleaner and greener
- Treating all types of people fairly.

However, they are less likely to agree that local public services are:

- Working to make the area safer
- Promoting the interests of local residents
- Acting on the concerns of local residents.

| % of respondents who think local public services are: | Tutbury & Outwoods | East Staffordshire | Comparison with East Staffordshire | Rank within East Staffordshire |
|---|--------------------|--------------------|------------------------------------|--------------------------------|
| Working to make the area safer | 63 | 67 | ↓ | 12 (joint) |
| Working to make the area cleaner and greener | 75 | 71 | ↑ | 9 |
| Promote the interests of local residents | 37 | 43 | ↓ | 16 |
| Act on the concerns of local residents | 44 | 47 | ↓ | 12 (joint) |
| Treat all types of people fairly | 79 | 72 | ↑ | 4 (joint) |

Respondents were asked how satisfied or dissatisfied they are with a number of different local services. In Tutbury & Outwoods the satisfaction levels are above the Borough average for all services with the exception of family doctors. Again older people were more positive than younger people and females were more satisfied than males.

| % of respondents who are satisfied with: | Tutbury & Outwoods | East Staffordshire | Comparison with East Staffordshire | Rank within East Staffordshire |
|--|--------------------|--------------------|------------------------------------|--------------------------------|
| Staffordshire Police | 67 | 62 | ↑ | 4 (joint) |
| Staffordshire Fire & Rescue | 91 | 84 | ↑ | 2 |
| Your GP | 82 | 85 | ↓ | 14 |
| Local hospital | 82 | 78 | ↑ | 9 |
| Local dentist | 81 | 72 | ↑ | 4 |

Respondents were asked if they had used a number of services provided or supported by the Council in the last 12 months. Compared to the Borough average, fewer Tutbury & Outwoods respondents had used sport facilities, museums, theatres and parks.

| % of respondents who have used the service in last 12 mths: | Tutbury & Outwoods | East Staffordshire | Comparison with East Staffordshire | Rank within East Staffordshire |
|---|--------------------|--------------------|------------------------------------|--------------------------------|
| Local tips/Household WRC | 92 | 90 | ↑ | 12 (joint) |
| Local Transport Information | 59 | 57 | ↑ | 10 |
| Bus | 59 | 57 | ↑ | 8 |
| Sport | 54 | 57 | ↓ | 14 |
| Libraries | 63 | 59 | ↑ | 7 (joint) |
| Museums | 16 | 22 | ↓ | 14 |
| Theatres | 28 | 30 | ↓ | 11 |
| Parks | 81 | 87 | ↓ | 17 (joint) |

Respondents were asked to state the extent to which they agree or disagree that the County Council and Borough Council provide value for money. Tutbury & Outwoods respondents were more likely to agree that ESBC provides value for money.

| % of respondents who think: | Tutbury & Outwoods | East Staffordshire | Comparison with East Staffordshire | Rank within East Staffordshire |
|---|--------------------|--------------------|------------------------------------|--------------------------------|
| East Staffordshire Borough Council provides value for money | 37 | 31 | ↑ | 6 |
| Staffordshire County Council provides value for money | 30 | 30 | → | 9 |

Respondents were asked how satisfied they are with the way the County Council and Borough Council runs things. Tutbury & Outwoods respondents are more likely to be satisfied with how the local authorities run things than the Borough average.

| % of respondents who are satisfied with the way: | Tutbury & Outwoods | East Staffordshire | Comparison with East Staffordshire | Rank within East Staffordshire |
|--|--------------------|--------------------|------------------------------------|--------------------------------|
| East Staffordshire Borough Council runs things | 48 | 43 | ↑ | 9 (joint) |
| Staffordshire County Council runs things | 42 | 41 | ↑ | 10 (joint) |

Local Decision Making

The Government aims to build communities where individuals are empowered to make a difference both to their own lives and to the area in which they live. A key indicator of this is the extent to which people feel able to influence decisions affecting their local area. Respondents were asked if they feel they can influence decisions in their locality. Tutbury & Outwoods respondents are more likely to feel they can than the Borough average.

| % of respondents who feel: | Tutbury & Outwoods | East Staffordshire | Comparison with East Staffordshire | Rank within East Staffordshire | England Average | Comparison with England |
|--|--------------------|--------------------|------------------------------------|--------------------------------|-----------------|-------------------------|
| They can influence decisions in their locality | 28 | 26 | ↑ | 10 | 29 | ↓ |

Respect and Consideration

Compared to the Borough average Tutbury & Outwoods respondents are more likely to score negatively in the following areas:

- Parents take responsibility for the behaviour of their children – the rationale behind this question is to focus local authorities and their partners on supporting effective parenting and to take action to ensure parents are held responsible where their children behave in an unacceptable manner.
- People from different backgrounds get on well together – this measure is widely recognised as a key indicator of a cohesive society. The Local Government White Paper sets out the aim of creating strong and cohesive communities.

However, Tutbury & Outwoods respondents are equally as likely to feel people do not treat each other with respect and consideration – the rationale behind this question is to encourage local authorities and their partners to take action to promote strong communities with shared values where community members treat each other with respect and consideration.

They are also more likely than the Borough average to feel they have been treated with respect and consideration by local public services – local authorities are encouraged to consider this indicator in terms of narrowing gaps between perceptions for different group(s).

| % of respondents who feel: | Tutbury & Outwoods | East Staffs | Comparison with East Staffs | Rank within East Staffs | England Average | Comparison with England |
|--|--------------------|-------------|-----------------------------|-------------------------|-----------------|-------------------------|
| Parents take responsibility for the behaviour of their children | 22 | 30 | ↓ | 15 | 30 | ↓ |
| People from different backgrounds get on well together | 70 | 71 | ↓ | 13 (joint) | 76 | ↓ |
| People do not treat each other with respect & consideration | 29 | 29 | → | 12 (joint) | 31 | ↑ |
| They have been treated with respect & consideration by local public services | 78 | 71 | ↑ | 6 (joint) | 72 | ↑ |

Community Safety

Respondents were asked how safe they feel when outside in their local area during the day and after dark. Across the Borough those who were dissatisfied with their local area as a place to live were more likely to feel unsafe.

Tutbury & Outwoods respondents are more likely to feel safe after dark and during the day than the Borough average.

| % of respondents who feel: | Tutbury & Outwoods | East Staffordshire | Comparison with East Staffordshire | Rank within East Staffordshire |
|----------------------------|--------------------|--------------------|------------------------------------|--------------------------------|
| Safe after dark | 55 | 54 | ↑ | 14 |
| Safe during the day | 96 | 90 | ↑ | 7 (joint) |

Anti-social Behaviour

Respondents were asked to think about their local area and to say whether each of a number of different types of antisocial behaviour was a very/fairly big problem. Local authorities are the key partner in tackling ASB and have statutory duties to enforce ASB legislation. Tutbury & Outwoods scores positively compared to the Borough average for most of the aspects of anti-social behaviour however it scores negatively in terms of:

- Teenagers hanging around the streets
- Vandalism/graffiti to property/vehicles

| % of respondents who feel the following ASB is a problem: | Tutbury & Outwoods | East Staffordshire | Comparison with East Staffordshire | Rank within East Staffordshire | England Average | Comparison with England |
|---|--------------------|--------------------|------------------------------------|--------------------------------|-----------------|-------------------------|
| Noisy neighbours or loud parties | 7 | 13 | ↑ | 8 | N/A | N/A |
| Teenagers hanging around the streets | 43 | 41 | ↓ | 11 | N/A | N/A |
| Rubbish or litter lying around | 26 | 27 | ↑ | 12 | N/A | N/A |
| Vandalism/graffiti to property/vehicles | 27 | 26 | ↓ | 14 | N/A | N/A |
| People using or dealing drugs | 24 | 28 | ↑ | 10 | 31 | ↑ |
| People being drunk or rowdy in public | 21 | 24 | ↑ | 9 (joint) | 29 | ↑ |
| Abandoned or burnt out cars | 2 | 5 | ↑ | 7 (joint) | N/A | N/A |

Confidence in Police

Respondents were asked whether they agree or disagree that the police and other local public services seek people's views about dealing with ASB and crime in their local area. This measure is being employed as a proxy to measure confidence in local agencies to tackle the community safety issues that matter to local people. Tutbury & Outwoods respondents were just as likely to agree with this statement (26%) as the Borough average (26%).

Respondents were then asked whether they agree or disagree that the police and other local public services are successfully dealing with ASB and crime in their local area. Tutbury & Outwoods respondents were more likely to agree with this statement (28%) than the Borough average (26%).

| % of respondents who agree the police & other local services are: | Tutbury & Outwoods | East Staffordshire | Comparison with East Staffordshire | Rank within East Staffordshire | England Average | Comparison with England |
|---|--------------------|--------------------|------------------------------------|--------------------------------|-----------------|-------------------------|
| Seeking people's views about dealing with ASB & crime | 26 | 26 | → | 11 (joint) | 25 | ↑ |
| Successfully dealing with ASB & crime | 28 | 26 | ↑ | 9 | 26 | ↑ |

Additional Questions

East Staffordshire Borough Council added additional questions to the Place Survey about the local bus services. Older respondents were more likely to be satisfied with each element than younger respondents as were non disabled respondents compared with disabled respondents.

Tutbury & Outwoods scores above the Borough average for satisfaction in terms of all aspects of the local bus service. In fact it has the highest score of all the wards for:

- The frequency of buses
- The number of bus stops
- Whether buses arrive on time
- How easy buses are to get on and off
- The bus service overall

| % of respondents who are satisfied with: | Tutbury & Outwoods | East Staffordshire | Comparison with East Staffordshire | Rank within East Staffordshire |
|--|--------------------|--------------------|------------------------------------|--------------------------------|
| The frequency of buses | 86 | 61 | ↑ | 1 |
| The number of bus stops | 92 | 76 | ↑ | 1 |
| The state of the bus stops | 81 | 71 | ↑ | 4 (joint) |
| Whether buses arrive on time | 91 | 59 | ↑ | 1 |
| How easy buses are to get on & off | 87 | 73 | ↑ | 1 |
| The bus service overall | 78 | 60 | ↑ | 1 |

Source: East Staffordshire Borough Council Place Survey 2008/09 Snap SurveyShop

Please ensure you quote the following source and copyright if using Census data:

Source: 2001 Census Area Statistics

Copyright: Census output remains Crown copyright. Census output is Crown copyright and is reproduced with the permission of the Controller of HMSO and the Queen's Printer for Scotland