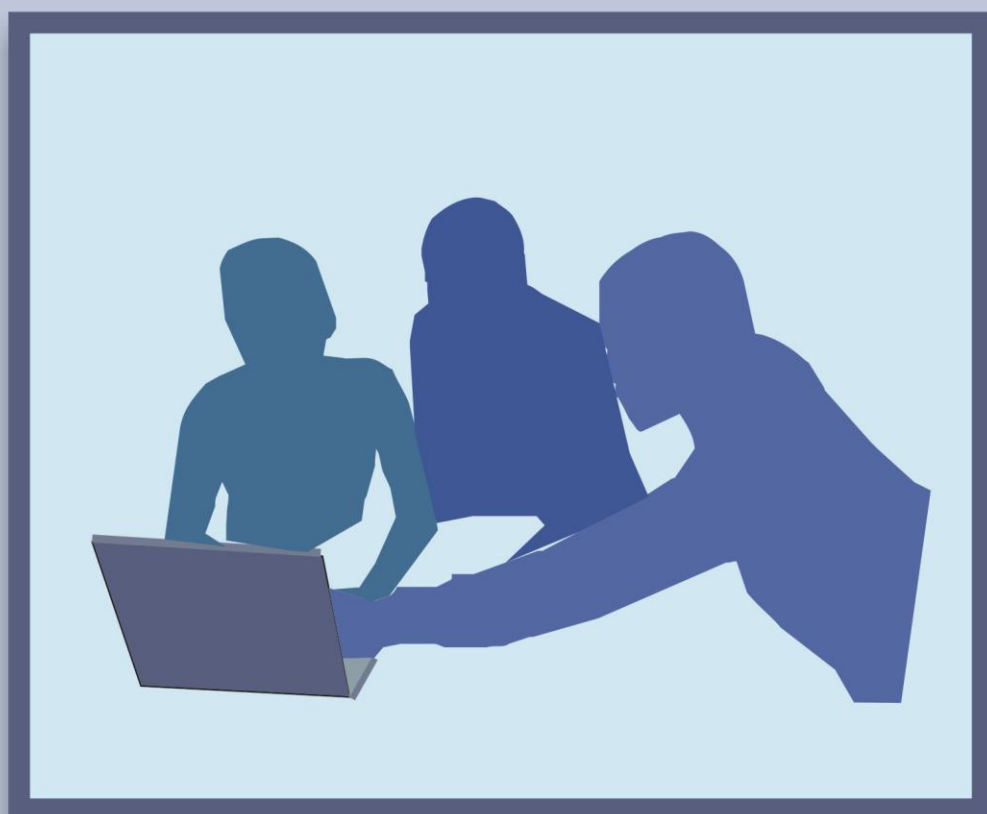


East Staffordshire Local Plan

Pre-Submission Consultation Stage

DUTY TO COOPERATE STATEMENT



March 2014

1. Overview

1.1 This Statement sets out how East Staffordshire Borough Council has co-operated with adjoining and other local authorities and key organisations so that they have the opportunity to shape the policies and proposals within the East Staffordshire Local Plan. East Staffordshire Borough Council works with these local authorities to ensure a co-ordinated approach on all strategic issues affecting more than one Authority area. Similarly, where infrastructure is provided over an area larger than the extent of the Borough, or there are implications beyond the Borough boundary, the Council consults formally, liaises and works actively with the key organisations responsible for its provision.

1.2 Local authority boundaries often have little relevance or impact on the way people live their lives, and their patterns of movement for work or leisure purposes, making dialogue and understanding of key planning issues across boundaries crucial. This is understood to be a major driver behind the Duty to Cooperate.

1.3 Section 110 of the Localism Act 2011 inserted section 33A, entitled “Duty to Cooperate in relation to planning of sustainable development”, into the Planning & Compulsory Purchase Act 2004. This defines co-operation on ‘strategic matters’ as:

“sustainable development or use of land that has or would have a significant impact on at least two planning areas, including (in particular) sustainable development or use of land for or in connection with infrastructure that is strategic and has or would have a significant impact on at least two planning areas.” and

“sustainable development or use of land in a two-tier area if the development or use—

- is a county matter, or
- has or would have a significant impact on a county matter”¹

1.4 The Town & Country Planning (Local Planning)(England) Regulations 2012, Regulation 4, sets out the ‘prescribed bodies’ the local authority must co-operate with, and who must co-operate with the local authority.

1.5 Paragraph 18 of the NPPF states that local planning authorities and other bodies should work jointly where the development requirements of one authority cannot wholly be met within that authority’s area, and that different geographic areas should be taken into account, such as travel to work areas. Working collaboratively with County Councils, Local Enterprise Partnerships and Local Nature Partnerships is specifically mentioned, as is working with private sector bodies, utility and infrastructure providers. Cooperation should be demonstrated on Submission of the Local Plan via, *inter alia*, a Memorandum of Understanding or jointly prepared

¹ Section 33A(4)(a) and(b) of the 2004 Act

strategy presented as evidence of an agreed position. Co-operation should be a continuous process of engagement from initial thinking through to implementation.

1.6 The National Planning Policy Framework (NPPF) (paras 156, 178-181) sets out the requirements and guidance that the Local Plan will be tested against. This includes co-operation on 'strategic priorities', defined² as policies to deliver:

- the homes and jobs needed in the area;
- retail, leisure and other commercial development;
- infrastructure for transport, telecommunications, waste management, water supply, waste water, and flood risk;
- the provision of minerals and energy (including heat);
- health, security, community and cultural infrastructure and other local facilities; and
- climate change mitigation and adaptation, conservation and enhancement of the natural and historic environment, including landscape.

The National Planning Policy Guidance (NPPG) published in March 2014 makes it clear that the duty to co-operate is not a duty to agree, as long as every effort has been made to secure the necessary co-operation on strategic cross-boundary matters.

1.7 When examining Local Plan Documents, Planning Inspectors will test compliance with the Duty to Cooperate legislation and requirements alongside the wider tests of the Plan's 'soundness'.

1.8 The Council considers it important to demonstrate two things:

- that it has taken active steps to co-operate with neighbouring authorities, other authorities and 'prescribed bodies' and on an on-going basis; and that the results and outcomes of this co-operation have influenced the policies of the Local Plan, and maximised the effectiveness of the Plan, in line with the NPPF.

2. What does Duty to Co-operate mean?

2.1 The legal duty to co-operate was introduced to fill the void on co-operation between authorities over a wider area, created when the revocation of the Regional Spatial Strategy was first announced in 2010 and the framework for working regionally via the West Midlands Regional Assembly was dismantled. However, East Staffordshire, and its neighbours, have co-operated and liaised over many years, not least in the preparation of the Regional Spatial Strategy (RSS). 2.2 In the absence of regional planning, the Duty is seen by Government as vital to ensure evidence gathering, policy and plan preparation are properly joined up.

² Para 156 of the NPPF

2.2 This Statement sets out the issues on which ESBC has worked cooperatively with other local authorities and other organisations, how it has done so, and the outcomes from that work where appropriate. The statement also sets out how cooperative working has influenced the Local Plan.

2.3 The Council discusses with the relevant local authorities the effects of proposed development in adjoining areas on East Staffordshire as well as the effect on the adjoining authority of proposed development in East Staffordshire. In some cases the outcome of this co-operation may be reflected in the Local Plan wording: in other cases the outcome might be that representations are sent between Councils or simply that the issue is monitored through ongoing liaison between officers.

2.4 The location of the main urban areas within the Borough has a direct influence on the nature and strength of the functional links and relationships with places in neighbouring authorities. These links and relationships relate to a wide range of planning and environmental issues. For East Staffordshire, there are cross-boundary links and relationships with the following neighbouring local authorities:

- South Derbyshire DC;
- Lichfield DC;
- Stafford BC;
- Derbyshire Dales DC;
- Staffordshire Moorlands DC; and
- Staffordshire County Council,

and the following local authorities that do not share a common boundary:

- Tamworth BC;
- Cannock Chase DC;
- Derby City Council/Amber Valley as part of the Derby HMA grouping;
- Birmingham City Council; and
- Derbyshire County Council.

2.5 The above list covers a range of different relationships. For example, there are strong housing and labour market links between East Staffordshire and South Derbyshire, with regular flows of commuters across the boundary. Similarly, places such as Lichfield represent important links in terms of proposed development on the A38 corridor, while Derby is an important retail destination for some East Staffordshire residents. The Duty to Cooperate is intended to ensure that local authorities have considered the relevant strategic issues and the need to work together, but does not require action or cooperation on all issues.

2.6 As well as these District/Borough/City level relationships, as East Staffordshire is within a two-tier authority area, a key element of discharging the Duty on many strategic issues relates to direct dialogue and cooperation with Staffordshire County Council. They are the leading authority on a number of important cross-boundary issues including education, public health, minerals, waste management, transport, countryside and landscape. The reference to South Derbyshire also represents an explicit recognition of the importance of established working across the former regional boundary between the West and East Midlands regions, as recognised in both their respective former RSSs.

2.7 Co-operation also takes place with the following 'prescribed bodies' as set out in Regulation 4³:

- Environment Agency
- English Heritage
- Natural England
- Civil Aviation Authority
- Homes and Communities Agency
- Primary Care Trust (via County Council Public Health function as intermediary during transition towards Clinical Commissioning Groups)
- Office of Rail Regulation (Ofrail)
- Integrated Transport Authority (Centro - West Midlands ITA)
- Highways Authority (Staffordshire County Council)
- Highways Agency (as agent where the Secretary of State is the highways authority)
- Marine Management Organisation
- Local Enterprise Partnership (Greater Birmingham & Solihull LEP)
- Local Nature Partnership (LNP)

2.8 In addition, the Council liaises with the following bodies, not set out in the Regulations, on cross-boundary strategic matters:

- Coal Authority – *information on ground conditions etc on former coalfields near and across Borough boundary*
- Central Rivers Initiative - *cross boundary partnership focusing on the restoration and enhancement of the Trent and Tame river valleys following mineral extraction creating improved biodiversity and opportunities for recreation;*
- Churnet Valley Living Landscapes Partnership – *a partnership for bringing forward projects to enhance the Churnet Valley recognising the sensitive*

³ The Town & Country Planning (Local Planning)(England) Regulations 2012, Regulation 4

landscape of the valley, its built heritage and its potential for appropriate tourism investment

- National Forest Company - *regeneration through woodland planting and management schemes over a cross boundary area*
- Staffordshire Wildlife Trust –*wildlife habitats both within and straddling Borough boundary*

2.9 In addition, there is ongoing liaison with the following utilities, documented in the Infrastructure Delivery Plan:

- Severn Trent Water;
- South Staffordshire Water;
- National Grid;
- BT;
- Western Power Transmission; and
- Mobile Operators Association (on behalf of the mobile networks operators).

Table 1a to 1c set out a summary of the co-operation with each body listed above, the issues identified, how these are being dealt with (outcomes) and how the Local Plan has been influenced by this co-operation.

3. Previous regional and sub-regional joint working activity

3.1 Co-operation with local authorities and key public, private and voluntary sector bodies has always been an integral part of the plan making process. However, the Duty to Co-operate provides the opportunity to formally record liaison between the Council and these bodies, and to systematically ensure that all potential cross-boundary issues are identified and action agreed if necessary.

3.2 Considerable collaborative working was undertaken as part of the RSS process as it related to East Staffordshire and neighbouring authorities. After 2004, when the RSS was adopted, the Council engaged with the Phase 2 Revision relating to housing, employment, waste and transport issues, and the Phase 3 Revision covering rural services, gypsies and travellers, culture, sport and tourism, climate change, the environment and minerals policy. East Staffordshire strongly supported central government's Growth Point agenda of 2006 onwards, and this was reflected in Burton upon Trent being designated a "Settlement of Significant Development" within the Phase 2 Revision document. The principle of stimulating economic growth through planning for housing provision and choice still underpins the housing requirement the Local Plan seeks to provide for.

3.3 The list below provides a summary of the specific cross boundary approaches and issues in which the Council engaged through the RSS process:

- the key linkages between Burton upon Trent as a settlement with functional and labour market linkages across the regional boundary with the East Midlands, including an explicit recognition of the need for ‘cross boundary cooperation’⁴ and joint working with South Derbyshire;
- the functional nature of the Northern Staffordshire Housing Market Area identified in the RSS, with the local authorities of Newcastle-under-Lyme Borough, Stafford Borough, Staffordshire Moorlands District, and the City of Stoke on Trent; and
- important intra- and inter-regional transport links along the A38 and A50 corridors, and via the rail lines connecting Birmingham and Derby, and Derby and Stoke on Trent.

3.4 The strategic guidance and policy on these matters derived through extensive consultation and joint working on the RSS, and the evidence base which underpinned it, formed an important part of the framework for the early development of the emerging ESBC Local Plan, as well as the plans of neighbouring authorities. The experience and knowledge gained, as well as some of the working relationships and networks which developed as a result of it, remain relevant and important (see list of groups in next section –many of which were formed to discuss matters sub-regionally before feeding in to the RSS preparation process). In addition to officer focused, technical collaboration, ESBC’s involvement in the RSS process provided the route through which local political endorsement and engagement in strategic, cross-regional issues was secured and expressed.

4. Regional and sub-regional co-operation now

4.1 ESBC is a member of the Greater Birmingham and Solihull Local Enterprise Partnership (GBSLEP), which is working closely with a range of public and private partners to address common challenges in a consistent way across boundaries. An early focus of the GBSLEP has been the role the planning system can play in setting the GBSLEP area apart from other areas by being positive, accessible, and business friendly. ESBC has formally signed-up to the adopted GBSLEP ‘Planning Charter’ along with a number of other Staffordshire local authorities including Lichfield District, Tamworth Borough, and Cannock Chase District.

4.2 The GBSLEP’s interest and involvement in spatial planning issues is leading to the production of a Spatial Plan for Recovery and Growth, a Consultation Draft of which was published in September 2013. The Strategy forms the spatial component of the LEP’s Strategy for Growth and identifies strategic objectives and policies with which the East Staffordshire Local Plan is broadly in conformity. At this stage, various models of accommodating future growth spatially are being consulted on, and the Council will remain engaged in this work.

⁴ As contained in the East Midlands RSS (2009), and as proposed by para 8.123, Report of the Panel, West Midlands RSS Phase 2 Revision, Sept 2009.

4.3 ESBC has been a long-term member of, and remains actively involved in, a number of County-wide groups and networks which exist to help facilitate and improve cross-boundary working within the County. These groups include:

- **Stoke and Staffordshire Planning Forum**
- **Staffordshire Development Officers Group**
- **Sub-group of above (Staffordshire CC and Districts/Borough) to discuss CIL and the s.106 benefits collected for SCC functions such as education, highways, etc)**
- **Development Control Officers Group**
- **Development Plan Managers Group**
- **Management Plan Officers Group.**
- **Staffordshire Renewable Energy Steering Group**
- **Sport Across Staffordshire and Stoke on Trent**
- **Gypsy Liaison Group (with Derbyshire authorities)**

4.4 These fora, some of which have their roots in discussing RSS matters from a Staffordshire perspective, facilitate inter-Council information exchange, discussion about sub-regional and strategic issues, and for the exploration and delivery of joint working opportunities. This sharing of best and emerging practice between local authorities plays a direct role in helping establish common approaches to strategic policy issues and challenges, especially of late in the context of national reforms and changes to national policy guidance. Another important purpose of some of these groups is the exchange of information on the activity of the two LEPs covering parts of Staffordshire (the Greater Birmingham & Solihull LEP and the Stoke on Trent and Staffordshire LEP).

4.5 In addition, senior elected Members from ESBC attend the Staffordshire & Stoke Planning Forum which provides opportunities for discussion and joint agreements on key planning issues. This group played an active role in coordinating County-wide input to the RSS, ensuring political buy-in and involvement across local authorities to strategic issues raised by the regional planning process.

5. Key strategic issues in East Staffordshire

5.1 There are a number of key issues which have formed the focus of cooperation activity to date, and which will continue to form the focus as the plan preparation process continues. The following section sets out to explain the following:

What are the main cross-boundary and strategic planning issues?

Who are the key partners/bodies in addressing or considering them?

What has ESBC done to engage with those bodies on those issues?

How has the Local Plan been influenced as a result?

5.2 In preparing the Pre-Submission Local Plan, ESBC has revisited and updated much of the evidence base to ensure the Plan is informed by appropriate and up to date information. When specifying the briefs for such studies, the Council has explicitly referred to the importance of cross boundary issues and engaging as required across the local authority's boundary. Therefore, in producing an updated evidence base, ESBC has ensured that this work has involved engagement and input from neighbouring local authorities, and sought to take into account cross-boundary issues. These studies, with a summary of the partners involved and the particular strategic aspects of the work are shown in Table 2.

6. The strategic issues - HOUSING REQUIREMENTS

6.1 East Staffordshire officers have discussed with each of its neighbours the proposed housing requirement of 11648 dwellings between 2012 and 2031. The Council has made it clear that it will accommodate all the proposed growth within its own boundaries.

6.2 All immediate neighbours have confirmed that they will not be expecting East Staffordshire to deliver any part of their housing requirement, with the exception of Derbyshire Dales District Council, who wrote to East Staffordshire Borough and all of the Derbyshire Dales' other neighbouring authorities, on the 20th March 2014 setting out that help was needed following the preparation of a housing study by consultants Atkins. The study indicates that due to environmental constraints within the District the objectively assessed need for the District Council cannot be delivered on suitable sites. In response to this East Staffordshire Borough Council has requested that Derbyshire Dales further demonstrates that all options have been assessed before expecting neighbouring authorities to accommodate the shortfall. The East Staffordshire Submission Local Plan was ratified at Full Council on the 24 March 2014. A Statement of Common Ground is in preparation by the Derby HMA authorities setting out the agreed approach to the Derbyshire Dale's shortfall.

6.3 The Council is co-operating with the GBSLEP and its partners on the production of a housing study for the whole of the LEP area. Consultants Peter Brett are appointed to undertake this work which will also include other local authorities outside the LEP area where there is a functional relationship with Birmingham, such as The Black Country. This is because Birmingham City Council has raised concerns that it may not be able to accommodate its entire housing requirement within its boundaries. The LEP work will contribute to further understanding of how future housing growth may be distributed across the LEP area. East Staffordshire will continue to be fully involved in the discussions, whilst recognising that it is not an adjacent local authority to Birmingham. An early draft of the Housing Study indicates that there is a weak relationship between East Staffordshire and the Birmingham housing market area.

6.4 In updating the Borough's SHMA (Strategic Housing Market Assessment) and housing requirement as part of the Local Plan evidence base input from the Strategic Housing Land Availability Assessment (SHLAA) Panel of developers and agents was received. Its preparation also involved a steering group workshop to which all neighbouring authorities were invited, as well as Derby City Council (as representatives, with South Derbyshire District Council, of the neighbouring Derby Housing Market Area partnership).

6.5 A key and long-running cross boundary issue for ESBC is that of the effects of development in South Derbyshire District (SDDC) on East Staffordshire, and vice-versa, due to the proximity of the two principal towns in each Authority (Swadlincote and Burton upon Trent). It is evident from a range of data regarding travel to work and housing markets that there are numerous strong functional links and relationships across the administrative boundary, with Burton seeing a net inflow of people working in the town but living in South Derbyshire. As referred above, SDDC is in the East Midlands region, whilst East Staffordshire is in the West Midlands, meaning that the two authorities were part of different regional structures and networks related to their two distinct former RSSs. Dialogue and regular discussions between the two authorities are ongoing, including most recently in the context of work by both authorities to update their evidence base regarding housing requirements.

6.6 In particular, the implementation of the planning permission for major development at the former Drakelow Power Station site is discussed regularly, together with the two County Councils of Derbyshire and Staffordshire, particularly with regard to education and highways aspects of the s.106 agreement which are in part to be implemented within East Staffordshire.

6.7 The Derby Housing Market Area authorities (Derby City Council, South Derbyshire District Council, Amber Valley Borough Council), North West Leicestershire District Council and East Staffordshire Borough Council are preparing a joint Statement of Common Ground covering the housing requirements for the interrelated Housing Market Areas in this sub-region.

7. The strategic issues – EMPLOYMENT, RETAIL & LEISURE

7.1 The Council engaged consultants to prepare an Employment Land Review (ELR 2013) to determine the amount of employment land required over the Local Plan period, how much of this could be accommodated on existing employment sites, and how much would require new allocations.

7.2 In putting forward the land requirement in the Plan, the Council and its consultants have taken into account the known allocations and growth plans in surrounding districts, to ensure there is not an over-provision sub-regionally. The most significant of these, and the closest to the Borough's boundary, is that at Drakelow in South Derbyshire District. South Derbyshire and Derbyshire Dales

District Council both attended an inception meeting with the appointed consultants undertaking the ELR for the Borough Council.

7.3 The Council has met in the past with South Derbyshire District Council, the Highways Agency and other bodies on proposals for a railfreight terminal at Burnaston on the A38 and A50 junction. This proposal has recently been reactivated and has been the subject of discussion with South Derbyshire. The Council will be involved in future meetings between relevant bodies to ensure a co-ordinated approach is taken to the proposal (see also Transportation Infrastructure below).

7.4 Currently there is very little investment in major new retail capacity in Burton upon Trent, although in Uttoxeter the Carter Square redevelopment is underway and retail development on the former JCB town centre site has outline permission. Following considerable new building in Swadlincote town centre in recent years overall retail capacity in the town has increased substantially. South Derbyshire District Council are not planning further significant increases, concentrating on qualitative improvements instead.

7.5 East Staffordshire Borough Council's retail study indicates little additional capacity is needed in the Borough to meet available expenditure, at least in the first part of the Plan period. There are a number of extant permissions for new development in Burton upon Trent town centre, and the outline permission in Uttoxeter mentioned above. The Council is planning for qualitative improvements and limited capacity increase to ensure its two town centres remain viable, competitive and attractive and do not lose customer expenditure to other centres, particularly Derby, Swadlincote and Lichfield. The planned new Sustainable Urban Extensions will contain local facilities serving the immediate catchment area for local needs. These proposals are unlikely to have an adverse impact on the shopping centres of surrounding districts, and, conversely, there are no measures currently proposed in these districts likely to impact on East Staffordshire.

7.6 The Borough has experienced steady investment in new leisure and sports facilities over the last few years (e.g. National Forest Adventure Farm, Barton Marina cinema, Meadowside Leisure Centre refurbishment, and the community use and hotel elements of St. George's Park). In the near future, the Leisure Centre investment will also enhance the facilities in Uttoxeter. There have not been any concerns raised by neighbouring authorities, when these have been mentioned in discussions, that any of these have drawn away expenditure from other Districts, or are likely to. Conversely, there are no known significant leisure projects proposed in surrounding districts that might draw expenditure away from East Staffordshire. South Derbyshire DC and East Staffordshire BC are co-operating on planning for the increased demand that there will be for different types of sports facilities as the populations of both Authority areas increase over their respective Local Plan periods.

8. The strategic issues – TRANSPORTATION INFRASTRUCTURE

8.1 Many transport and highways infrastructure issues are by nature often strategic and cross-regional in nature, and ESBC has worked closely with Staffordshire County Council as the highways authority, as well as with the Highways Agency with regard to the strategic road network. In addition, given the location of East Staffordshire, the Council also has some history of working across the County (and regional) boundary in relation to transport infrastructure and priorities.

8.2 This will become increasingly important, with joint working on the A38 corridor necessitating co-operation with South Derbyshire District Council, Derby City Council, and Derbyshire County Council as well as the Highways Agency, Staffordshire County Council and Lichfield District Council (and possibly other local authorities further afield). There has been, and continues to be, engagement with the Highways Agency regarding the A38 corridor.

8.3 Staffordshire County Council, in February 2014 consulted residents, businesses and all interested parties on proposals for Project A of the A50 Growth Corridor. Project A is expected to involve the creation of a new junction to the west of Uttoxeter near Land to the West of Uttoxeter proposed allocation. Project B, expected to be consulted on later in 2014 will involve proposals to the east of Uttoxeter proposes for the installation of a new junction and the removal of two existing roundabouts which cause significant traffic congestion, particularly at peak times. East Staffordshire Borough Council will continue working with Staffordshire County Council on the A50 Growth Corridor proposals.

8.4 The Borough and County Councils have worked closely and positively over the period since 2008/9 to ensure that transport issues were fully recognised in emerging planning documents, and based on a relevant, robust evidence base. This included ESBC engaging actively with the County Council to produce a transport model for Burton to help inform strategic land allocations and planning decision-making, and to shape a transport strategy for the Borough. This resulted in a raft of reports and evidence by the County's consultants who constructed the transport model, as well as work by the County Council who prepared a strategy based on this work in partnership with ESBC in 2011.

8.5 As the Local Plan has evolved, and the development allocations have firmed up over the different stages, the County and their consultants have undertaken further work to model the effects of the Plan's proposals in Burton upon Trent and Uttoxeter on vehicle flows. This has fed into the production of an updated 2013 Integrated Transport Strategy (ITS) for East Staffordshire. The County produce an ITS for each Borough/District, ensuring co-ordination of transportation projects and investment over the whole County area.

9. The strategic issues – OTHER INFRASTRUCTURE

9.1 In planning for significant growth over the Local Plan's 19 year period, the Council must ensure that all necessary infrastructure is capable of being delivered in time to serve new development. In addition to transport a wider range of infrastructure related issues need to be considered. In preparing the Pre-Submission Consultation stage of the Local Plan, an Infrastructure Delivery Plan (IDP) has been produced to inform judgements about the likely impact and deliverability of the Plan's proposals. The paragraphs below provide some further detail.

9.2 Given the proposed focus on Burton for future development, the **capacity and location of schools** is a key issue on which the Council is continuing to engage with the County Council as the Education Authority. Using data and modelling related to existing school rolls, and population growth and projections, it is clear that Burton is facing some challenges in ensuring there are sufficient school places to meet demand. There are existing capacity constraints, and ESBC is guided by the input and advice from SCC in both negotiating Section 106 and other contributions from developers, and also in shaping the emerging Local Plan policies. The Borough and County jointly commissioned a study – "Burton upon Trent School Planning" – which has fed into the Local Plan preparation. The Borough Council continues to engage with the County Council and further evidence base has been commissioned to both quantify the education shortfall and to identify potential school sites in Burton upon Trent. A meeting with Sports England has also taken place to further assess if there is any flexibility regarding existing school sites and the relationship with existing playing fields.

9.3 Whilst school capacity is a major issue within Burton upon Trent, the effect of development in other Districts on school places in East Staffordshire, and vice-versa is not considered to be significant, with possible minor issues at Doveridge/Uttoxeter and Ashbourne/Mayfield being monitored. This work and dialogue will continue as the Plan preparation process continues.

9.4 Similarly, understanding the existing capacity and future needs in terms of **utility networks** (water, gas, electricity and telecommunications) is critical. In preparing the Infrastructure Delivery Plan (IDP) that accompanies the Local Plan ESBC's consultants have engaged with the relevant network operators to discuss any current and predicted challenges. There appear to be no serious capacity or provision problems.

9.5 **Health infrastructure** is another area where growth in the population will lead to increased requirements. Also, there is a greater awareness that spatial planning has a role to play in improving **health and wellbeing** through careful design and encouragement of a healthier lifestyle. In preparing the Local Plan, the Council is aware of the importance of meeting the NPPF requirements to embed health issues

into planning policies and priorities. Early engagement has been had with the lead contact on Public Health at the County Council, and they have signposted the Council to sources of local data regarding health indicators and trends and advised on policy approaches to health. In taking forward the Local Plan, ESBC continues to liaise closely with the Public Health team, and seek their further guidance on ways to ensure the Local Plan appropriately affects these wider links to the health agenda.

9.6 In addition, the Council's Water Cycle Study has been updated. It includes consideration of strategic, cross border **water and flood related issues**, including water supply and waste water, with close liaison with the Environment Agency (EA) and has been prepared in line with the EA's guidance document and best practice notes, as well as giving consideration to the relevant issues in neighbouring Districts. The update includes a review of the asset management plans of the water supply and sewerage infrastructure providers. An update to the Strategic Flood Risk Assessment (SFRA) has also been produced, in close liaison with the EA, Severn Trent and Staffordshire County Council.

10. The strategic issues – THE NATURAL ENVIRONMENT

10.1 ESBC has prepared a **Sustainability Appraisal (SA) and Habitats Regulation Assessment (HRA)** to help inform the Plan. In preparing the Habitat Regulations Assessment, the views and guidance of Natural England have been sought.

10.2 East Staffordshire Borough Council is engaged in ongoing work relating to the **Cannock Chase Special Area of Conservation (SAC)** to identify any impacts upon the SAC from development. This is being programmed by a formalised partnership of neighbouring Districts, Staffordshire County Council as landowners and site manager, and unitary authorities surrounding the SAC to understand the impact on the SAC now, and the potential impact from growing visitor numbers in the future. To date, Visitor and Observational Surveys have been carried out along with visitor impact analysis leading to a Mitigation Strategy, and future SPD which all the local planning authorities will sign up to. Natural England has been involved along the way and has given advice on draft local plan policy prior to the completion of this work.

11. Strategic Locations

11.1 ESBC is in active liaison with Lichfield DC regarding the Brookhay Village/Twin Rivers Park proposal where some 7500 homes in Lichfield District near the boundary are being promoted by a private developer together with employment and leisure facilities that would be located within ESBC.

12. Conclusions

12.1 The above sections provide an overview of the ways in which East Staffordshire has, and continues, to work collaboratively and seeks to cooperate with neighbouring authorities and other relevant bodies. A key relationship is with the County Council as the provider of several key services and functions over a much larger area than that covered by East Staffordshire (transportation, education, health co-ordination, waste management, minerals and environment & landscape). The process of cooperation and dialogue about key issues will continue as the East Staffordshire Local Plan progresses, and this Statement will be updated in due course.

12.2 The information provided indicates that following the breakdown of many of the previous RSS related structures, ESBC has been seeking to ensure that the relationships and joint working with other local authorities and key bodies has continued strongly and evolved to meet the changing needs of producing the Local Plan. In the context of updating the evidence base to underpin the Local Plan, efforts have been made to ensure input and agreement with relevant partner organisations and neighbours, including a shared understanding of the approach and assumptions made in preparing a new Local Plan.

12.3 In summary, East Staffordshire currently regards the following as being the most significant issues affecting or potentially affecting two or more planning areas (including Staffordshire County Council) or Regulation 4 and other bodies where issues may affect their responsibilities over a wider area than East Staffordshire:

- A38 (and to a lesser extent A50) corridor capacity issues
- Possible railfreight terminal at A38/A50 Junction
- Need for new and expanded schools in Burton upon Trent
- New transportation infrastructure to support growth proposals (coordinating with County Council and Highways Agency)
- Cannock Chase SAC
- Brookhay Village/Twin Rivers Park proposals

TABLE 1a

SUMMARY OF CO-OPERATION WITH REGULATION 4 BODIES THAT ARE PARTNERS ON STRATEGIC ISSUES

<i>Body/ Partner</i>	<i>Joint Evidence</i>	<i>Partnerships</i>	<i>Common Strategic Issues Identified</i>	<i>Outcomes</i>	<i>How the Local Plan has been influenced</i>
South Derbyshire DC	<ul style="list-style-type: none"> • Gypsy and Traveller Accommodation Assessment 	<ul style="list-style-type: none"> • Derbyshire Gypsy Liaison Group • Drakelow transport issues liaison • Central Rivers Initiative • Liaison with South Derbyshire/ Derby City/ Amber Valley Housing Market Area work on East Staffordshire SHMA 	<ul style="list-style-type: none"> • Monitoring housing, employment and infrastructure provision from Drakelow development in South Derbyshire • Pressure for development in Newton Road in South Derbyshire, adjoining ESBC boundary • A38 and A50 corridor traffic levels, with regard to possible railfreight terminal development at Burnaston, and Derby/South Derbyshire housing growth to south of Derby, and Burton housing growth • Possible green corridor proposals Branston/ Drakelow across Trent • Assessing gypsy accommodation need. 	<ul style="list-style-type: none"> • Feb. 2009 Memorandum of Understanding between ESBC and SDDC • Continuing co-operation to form A38 partnership with Highways Agency • Continuing liaison on the other issues • Statement of Common Ground with Derby HMA authorities and NW Leics. Provision of objectively assessed housing need 	<ul style="list-style-type: none"> • Drakelow housing and employment capacity has been taken into account in the requirements for both these land uses in the Local Plan. • Reference to A38/A50 junction in Plan, though in SDDC. • Gypsy and Traveller policy in Local Plan

Body/ Partner	Joint Evidence	Partnerships	Common Strategic Issues Identified	Outcomes	How the Local Plan has been influenced
Lichfield DC	<ul style="list-style-type: none"> • Evidence Base Relating to Cannock Chase SAC & the Appropriate Assessment of Core Strategies • Cannock Chase SAC Visitor Survey • Impacts of Recreation to Cannock Chase SAC • Cannock Chase SAC Visitor Impact Mitigation Report • Staffordshire County-wide Renewable/ Low Carbon Energy Study 	<ul style="list-style-type: none"> • Cannock Chase SAC Partnership • Staffordshire Renewable Steering Group • Central Rivers Initiative • Sports Across Staffordshire & Stoke-on-Trent • GBSLEP 	<ul style="list-style-type: none"> • A38 trunk road • Housing, including future distribution patterns across GBSLEP area as a result of LEP housing study • Cannock Chase SAC • Brookhay Villages and Twin Rivers Park 	<ul style="list-style-type: none"> • Outcomes and approaches to housing and employment modelling agreed as consistent and compatible • Continued co-operation through Partnership – co-operation on the drafting of a Visitor Impact Mitigation Strategy for the SAC to be adopted by all partnership authorities • Updated SA undertaken to consider Brookhay Villages/Twin Rivers Park in the context of the emerging LDC Local Plan • Continuing co-operation to form A38 partnership with Highways Agency • Memorandum of Understanding and Statement of Common 	<ul style="list-style-type: none"> • Housing and employment capacity has been taken into account in the requirements for both these land uses in the Local Plan. • Cannock Chase policy in Plan. • Continued co-operation through Partnership – on the drafting of a SPD for the SAC to be adopted by all partnership authorities • Joint authority meeting on Brookhay/ Twin Rivers Park potential strategic development.– • Future liaison on any housing requirement issues arising out of GBSLEP market analysis • Blue Infrastructure and Water Based

Body/ Partner	Joint Evidence	Partnerships	Common Strategic Issues Identified	Outcomes	How the Local Plan has been influenced
				Ground May 2013 to support LDS Examination	Recreation policy in Plan
Tamworth BC	<ul style="list-style-type: none"> • County-wide Renewable/ Low Carbon Energy Study • Central Rivers Initiative Biodiversity Opportunity Mapping 	<ul style="list-style-type: none"> • GBSLEP Partnership • Staffordshire Renewable Steering Group • Central Rivers Initiative • Sports Across Staffordshire & Stoke-on-Trent 	<ul style="list-style-type: none"> • Housing, including future distribution patterns across GBSLEP area as a result of LEP housing study 	<ul style="list-style-type: none"> • Future liaison on any housing requirement issues arising out of GBSLEP market analysis 	<ul style="list-style-type: none"> • Blue Infrastructure and Water Based Recreation policy in Plan
Cannock Chase DC	<ul style="list-style-type: none"> • Evidence Base Relating to Cannock Chase SAC - see list under Lichfield DC 	<ul style="list-style-type: none"> • Cannock Chase SAC Partnership • Staffordshire Renewable Steering Group • Sports Across Staffordshire & Stoke-on-Trent • GBSLEP 	<ul style="list-style-type: none"> • Joint evidence base published that identifies the scale and cause of impact on Cannock Chase SAC of development in surrounding districts and recommends mitigation measures 	<ul style="list-style-type: none"> • Continued co-operation through Partnership – co-operation on the drafting of a Visitor Impact Mitigation Strategy for the SAC to be adopted by all partnership authorities. 	<ul style="list-style-type: none"> • Cannock Chase policy in Plan • Continued co-operation through Partnership – co-operation on the drafting of a SPD for the SAC to be adopted by all partnership authorities
Stafford BC	<ul style="list-style-type: none"> • Evidence Base Relating to 	<ul style="list-style-type: none"> • Cannock Chase SAC Partnership 	<ul style="list-style-type: none"> • Cannock Chase SAC 	<ul style="list-style-type: none"> • Continued co-operation through Partnership – 	<ul style="list-style-type: none"> • Cannock Chase policy in Plan

Body/ Partner	Joint Evidence	Partnerships	Common Strategic Issues Identified	Outcomes	How the Local Plan has been influenced
	Cannock Chase SAC - see list under Lichfield DC	<ul style="list-style-type: none"> • Staffordshire Renewable Steering Group • Sports Across Staffordshire & Stoke-on-Trent 		<p>co-operation on the drafting of a Visitor Impact Mitigation Strategy for the SAC to be adopted by all partnership authorities</p> <ul style="list-style-type: none"> • MoU between the two authorities being progressed for signing by respective Members 	<ul style="list-style-type: none"> • Continued co-operation through Partnership – co-operation on the drafting of a SPD for the SAC to be adopted by all partnership authorities
Staffordshire Moorlands DC	<ul style="list-style-type: none"> • Staffordshire County-wide Renewable/Low Carbon Energy Study 	<ul style="list-style-type: none"> • Churnet Valley Living Landscapes Project • Alton Towers Transport Liaison Group 	<ul style="list-style-type: none"> • Effects on A50 of increased development in Uttoxeter, and Cheadle, and on local roads at Cheadle and Alton Towers. • Churnet Valley Living Landscapes Project and possible Area of Outstanding Beauty designation • Joint evidence base published that identifies the scale and cause of impact on Cannock Chase SAC of development in surrounding districts and recommends mitigation measures 	<ul style="list-style-type: none"> • Continued liaison monitoring and taking action when required. 	<ul style="list-style-type: none"> • Landscape Character work still underway by SCC. Continued liaison with SMDC on Churnet Valley Living Landscapes Project

Body/ Partner	Joint Evidence	Partnerships	Common Strategic Issues Identified	Outcomes	How the Local Plan has been influenced
Derbyshire Dales DC	<ul style="list-style-type: none"> • Gypsy and Traveller Accommodation Assessment 	<ul style="list-style-type: none"> • Derbyshire Gypsy Liaison Group 	<ul style="list-style-type: none"> • Assessing gypsy accommodation need • Possible education needs in Staffordshire from housing growth in Derbyshire Dales • Setting of Sudbury Hall in Derbyshire Dales – landscape character policies to protect 	<ul style="list-style-type: none"> • Ongoing liaison to ensure these issues are satisfactorily dealt with 	<ul style="list-style-type: none"> • Gypsy and Traveller policy in Local Plan
Derby City Council	<ul style="list-style-type: none"> • Gypsy and Traveller Accommodation Assessment 	<ul style="list-style-type: none"> • Derbyshire Gypsy Liaison Group • Liaison with South Derbyshire/ Derby City/ Amber Valley Housing Market Area work on East Staffordshire SHMA 	<ul style="list-style-type: none"> • A38/A50 corridor traffic levels, with regard to possible railfreight terminal development at Burnaston, and Derby/South Derbyshire housing growth to south of Derby, and Burton housing growth 	<ul style="list-style-type: none"> • Joint ongoing liaison with Derby City and South Derbyshire • Continuing joint pressure to form A38 partnership with Highways Agency • Statement of Common Ground with Derby HMA authorities and NW Leics. Provision of objectively assessed housing need 	<ul style="list-style-type: none"> • Gypsy and Traveller policy in Local Plan • Reference to A38/A50 junction in Plan.
Birmingham City Council	<ul style="list-style-type: none"> • Evidence Base Relating to Cannock Chase 	<ul style="list-style-type: none"> • GBSLEP • Cannock Chase SAC Partnership 	<ul style="list-style-type: none"> • LEP-wide discussions on accommodating Birmingham's housing requirement 	<ul style="list-style-type: none"> • Further work via GBSLEP housing study • Ongoing liaison with 	<ul style="list-style-type: none"> • Cannock Chase policy in Plan • Continued co-operation

Body/ Partner	Joint Evidence	Partnerships	Common Strategic Issues Identified	Outcomes	How the Local Plan has been influenced
	<p>SAC & the Appropriate</p> <ul style="list-style-type: none"> • Assessment of Core Strategies • Cannock Chase SAC Visitor Survey • Impacts of Recreation to Cannock Chase SAC • Cannock Chase SAC Visitor Impact Mitigation Report 		<ul style="list-style-type: none"> • Highway and rail links to the West Midlands, particularly the A38 corridor • Cannock Chase SAC 	<p>Highways Agency and local authorities on A38 issues</p> <ul style="list-style-type: none"> • Duty to Cooperate Statement being prepared. 	<p>through Cannock Chase Partnership – co-operation on the drafting of a SPD for the SAC to be adopted by all partnership authorities</p>
<p>Staffordshire County Council: Transportation</p>	<ul style="list-style-type: none"> • Transportation Study and Modelling • E. Staffs Integrated Transport Strategy 	<ul style="list-style-type: none"> • Alton Towers Transport Liaison Group 	<ul style="list-style-type: none"> • Highlighting locations where transportation infrastructure upgrades will need to be funded where major or cumulative development proposed to take place. 	<ul style="list-style-type: none"> • East Staffs ITS will contain transportation infrastructure package of measures to deliver the Local Plan development strategy • Identification of transportation infrastructure requirements, to feed into Infrastructure 	<ul style="list-style-type: none"> • Spatial Strategy, Infrastructure Delivery Plan, and Transportation policies in Local Plan

Body/ Partner	Joint Evidence	Partnerships	Common Strategic Issues Identified	Outcomes	How the Local Plan has been influenced
				Delivery Plan and Plan viability work.	
Staffordshire County Council Education, Libraries	<ul style="list-style-type: none"> • Burton upon Trent School Planning 	<ul style="list-style-type: none"> • Discussions with ESBC consultants undertaking the Infrastructure Delivery Plan have taken place • ESBC and SCC Education therefore work closely with each other to plan for future educational demand. 	<ul style="list-style-type: none"> • Possible education place need in East Staffordshire as a result of new housing allocations in Derbyshire Dales District Council • Possible effect on schools in Burton of South Derbyshire developments at Drakelow. 	<ul style="list-style-type: none"> • There is a current under-provision of primary and secondary spaces within the Borough and the additional development planned for the Borough will increase this need further. Ongoing evidence base work is being prepared to further quantify shortfall of places and potential locations for school expansion and new provision. 	<ul style="list-style-type: none"> • Identification of new school locations in a new Local Plan policy.
Staffordshire County Council Public Health	<ul style="list-style-type: none"> • Staffordshire Joint Strategic Needs Assessment 2012 • East Staffordshire - Enhanced Joint Strategic Needs Assessment 	<ul style="list-style-type: none"> • Discussions with SCC Public Health as link to Clinical Commissioning Groups • Discussions with 	<ul style="list-style-type: none"> • GP facility deficits in Branston, Rolleston and Uttoxeter may have cross-boundary implications, but most practices are currently taking on more patients. • Need for more specific 	<ul style="list-style-type: none"> • Ongoing liaison to ensure healthcare provision is sufficient for new developments and helping to address existing deficiencies. 	<ul style="list-style-type: none"> • Improving opportunities for greenspace, good access by foot or cycle, new policies on community orchards and requiring Health Impact Statements on

Body/ Partner	Joint Evidence	Partnerships	Common Strategic Issues Identified	Outcomes	How the Local Plan has been influenced
	November 2012	ESBC consultants undertaking the Infrastructure Delivery Plan have taken place	policies covering spatial elements of improving wellbeing, through recreation, social interaction, etc		major developments have been introduced into policy.
Staffordshire County Council Minerals	<ul style="list-style-type: none"> • Draft Minerals Local Plan 	<ul style="list-style-type: none"> • Central Rivers Initiative 	<ul style="list-style-type: none"> • Not sterilising mineral resources - particularly aggregates in the Trent floodplain/A38 corridor where new urban extensions planned 	<ul style="list-style-type: none"> • Continued liaison with County and developers to ensure extraction before development where practicable 	<ul style="list-style-type: none"> • Recyclable materials policy – percentage required has been influenced by evidence base and partnership working
Staffordshire County Council Waste Management	<ul style="list-style-type: none"> • Consultation on Joint Waste Local Plan 	None	<ul style="list-style-type: none"> • Identification of sites for new waste transfer facilities, particularly on employment sites. Whilst these would largely serve a local hinterland, there is the possibility of a cross – boundary area being served. 	<ul style="list-style-type: none"> • Continued liaison on identifying areas where a site needs to be identified, and identifying such sites. 	<ul style="list-style-type: none"> • Local Plan policies cover on-site or local waste management facilities.
Staffordshire County Council	<ul style="list-style-type: none"> • Landscape Character update work and 	<ul style="list-style-type: none"> • SCC as Local Lead Flood Authority 	<ul style="list-style-type: none"> • Need to support rural business with more flexible attitude whilst protecting 	<ul style="list-style-type: none"> • Policies and strategy have been reviewed to ensure they are rural 	<ul style="list-style-type: none"> • Landscape Character policies reference future SPD, expected to be

Body/ Partner	Joint Evidence	Partnerships	Common Strategic Issues Identified	Outcomes	How the Local Plan has been influenced
Environment & Countryside	<p>forthcoming Planning for Landscape Change SPD Review</p> <ul style="list-style-type: none"> • Assistance with Strategic Flood Risk Assessment • Staffordshire Renewable Energy Study • Staffordshire Rural Declaration 	<ul style="list-style-type: none"> • Staffordshire Planning Officers renewable energy and landscape group 	vulnerable or sensitive landscapes	<p>proofed</p> <ul style="list-style-type: none"> • ESBC on partnership overseeing production of an updated Planning For Landscape Change SPD • SCC have been consulted on evidence base relating to SFRA 	<p>completed prior to Local Plan adoption</p> <ul style="list-style-type: none"> • SCC contributed to wording of policies on flood protection, SuDS, etc. • Role of Staffordshire Rural Declaration reflected into the Local Plan
Staffordshire (Local) Strategic Partnership		<ul style="list-style-type: none"> • Staffordshire (Local) Strategic Partnership • East Staffordshire Local Strategic Partnership 	<ul style="list-style-type: none"> • Staffordshire will have a thriving economy • Staffordshire will be a safe, healthy and aspirational place to live 	<ul style="list-style-type: none"> • No specific actions required 	<ul style="list-style-type: none"> • Incorporated into Local Plan principles and policies, as are ES LSP principles, though these are not cross-boundary
Derbyshire County Council	<ul style="list-style-type: none"> • Gypsy and Traveller Accommodation Assessment 	<ul style="list-style-type: none"> • Derbyshire Gypsy Liaison Group 	<ul style="list-style-type: none"> • Through Staffs CC , possible additional education space needs in East Staffs as a result of housing growth in Derbyshire settlements such as Ashbourne and Doveridge. 	<ul style="list-style-type: none"> • Ongoing liaison 	<ul style="list-style-type: none"> • Gypsy and Traveller policy in Local Plan

Body/ Partner	Joint Evidence	Partnerships	Common Strategic Issues Identified	Outcomes	How the Local Plan has been influenced
			<ul style="list-style-type: none"> Assessing gypsy accommodation need 		
Greater Birmingham & Solihull LEP	<ul style="list-style-type: none"> Strategic Plan for Recovery & Growth 	<ul style="list-style-type: none"> With all other LEP members at senior level 	<ul style="list-style-type: none"> LEP-wide discussions on accommodating Birmingham's housing requirement Highway and rail links to the West Midlands, particularly the A38 corridor Pump-priming investment from LEP funding to unlock regeneration sites in the Borough e.g. funding received for Dove Way, Uttoxeter 	<ul style="list-style-type: none"> Ongoing discussion with partners on outcomes and solutions 	<ul style="list-style-type: none"> Emerging role of LEP in influencing planning policy is acknowledged in Plan
Environment Agency	<ul style="list-style-type: none"> Water Cycle Study Strategic Flood Risk Assessment - Level 1 and 2 2013 Biodiversity Opportunity Mapping 	<ul style="list-style-type: none"> Central Rivers Initiative With SCC as the latter is SuDS authority 	<ul style="list-style-type: none"> Flood Protection Water Quality (ESBC's Water Framework Directive responsibilities extend down Trent to Humber Estuary) 	<ul style="list-style-type: none"> New or improved flood defences unlikely to be required but emphasis of Plan must still be sequential test, ensuring new-build has appropriate flood resilience. 	<ul style="list-style-type: none"> EA (along with SCC as Local Lead Flood Authority) shaped strategy and wording of policies to ensure approach to development in flood zones is in line with EA advice and any development involving alterations to watercourses reflects

Body/ Partner	Joint Evidence	Partnerships	Common Strategic Issues Identified	Outcomes	How the Local Plan has been influenced
					most recent practice and information
English Heritage	<ul style="list-style-type: none"> • Extensive Urban Surveys 2013 • Historic Landscape Characterisation Assessment 2013 • Farmsteads study as adjunct work to Redundant Rural Buildings SPD 	<ul style="list-style-type: none"> • No formal partnerships 	<ul style="list-style-type: none"> • No strategic issues identified 		<ul style="list-style-type: none"> • EH has contributed to the wording of the heritage policies in the Local Plan
Natural England	<ul style="list-style-type: none"> • Evidence Base Relating to Cannock Chase SAC & the Appropriate Assessment of Core Strategies • Cannock Chase SAC Visitor Survey • Impacts of Recreation to Cannock Chase SAC 	<ul style="list-style-type: none"> • Cannock Chase SAC Partnership 	<ul style="list-style-type: none"> • All European protected sites within 15km of East Staffordshire have been considered, however only Cannock is identified as a strategic cross boundary issue 	<ul style="list-style-type: none"> • Continued co-operation through Partnership – co-operation on the drafting of a SPD for the SAC to be adopted by all partnership authorities 	<ul style="list-style-type: none"> • Wording of Detailed Policy in Local Plan relating to European-level sites, particularly for Cannock Chase.

Body/ Partner	Joint Evidence	Partnerships	Common Strategic Issues Identified	Outcomes	How the Local Plan has been influenced
	<ul style="list-style-type: none"> • Cannock Chase SAC Visitor Impact Mitigation Report • Habitats Regulations Assessment 2013 				
Civil Aviation Authority	None	None	<ul style="list-style-type: none"> • Contacted, asking if any issues surrounding Tatenhill airfield or any other issues. No reply - assume no issues. 	None	
Homes and Communities Agency	None	None	<ul style="list-style-type: none"> • Contacted. No reply. Assume no issues 	None	
Office of Rail Regulation (Ofrail)	None	None	<ul style="list-style-type: none"> • Contacted, no reply, but no strategic issues likely to be apparent 		
Integrated Transport Authority (Centro - West Midlands ITA)	None	None	<ul style="list-style-type: none"> • Contacted, asking if any issues regarding rail and bus services into Birmingham. No reply, so assume no issues. 	None	
Highways	<ul style="list-style-type: none"> • A38 Corridor Sustainable 	<ul style="list-style-type: none"> • None yet – envisage A38 	<ul style="list-style-type: none"> • A38 and A50 and cumulative impact of developments 	<ul style="list-style-type: none"> • Close ongoing liaison on A38 Corridor 	<ul style="list-style-type: none"> • Contributed to discussions on

Body/ Partner	Joint Evidence	Partnerships	Common Strategic Issues Identified	Outcomes	How the Local Plan has been influenced
Agency	Transport Solution (STS) Study <ul style="list-style-type: none"> • Modular Scheme • Development • Report March 2011) 	route-based strategy partnership working	planned in neighbouring authorities as well as East Staffs	Partnership	transport evidence base
Marine Management Organisation	<ul style="list-style-type: none"> • Humber River Basin Management Plan 	• None	<ul style="list-style-type: none"> • Contacted with regard to possible effects of new development on Trent flows to Humber Estuary and the provisions of the Humber River Basin Management Plan. No issues envisaged, as responsibilities under Water Framework Directive acknowledged and EA appraise possible effects. 	• No reply received yet	<ul style="list-style-type: none"> • ESBC's Water Framework Directive responsibilities extend down Trent to Humber Estuary and so new water quality policy included in Plan.

<i>Body/ Partner</i>	<i>Joint Evidence</i>	<i>Partnerships</i>	<i>Common Strategic Issues Identified</i>	<i>Outcomes</i>	<i>How the Local Plan has been influenced</i>
Local Nature Partnerships- Managed by the following: Staffordshire Wildlife Trust Peak District National Park Authority Nottinghamshire County Council			<ul style="list-style-type: none"> • Staffordshire LNP is still at early stages of formation, but close working with SWT (the lead body) means that no issues identified. • Nottinghamshire County Council (Lowland Derbyshire and Nottinghamshire Local Nature Partnership) – contacted but no response - assume no strategic issues to identify. • Peak District National Park Council (Peak District Local Nature Partnership) – again contacted but no response therefore assume no strategic issues to identify 	<ul style="list-style-type: none"> • LNPs – ongoing liaison with 3 LNPs to ensure any cross boundary issues arising in the future are dealt with. 	<ul style="list-style-type: none"> • The Local Plan, through the strategy and implementation of several policies (particularly for biodiversity, green infrastructure) and joint working with SWT on biodiversity opportunity mapping have ensured that the Local Plan supports the objectives/ purpose of the Staffordshire LNP.

TABLE 1b

SUMMARY OF CO-OPERATION WITH NON-REGULATION 4 BODIES THAT ARE PARTNERS ON STRATEGIC ISSUES

<i>Body/Partner</i>	<i>Joint Evidence</i>	<i>Partnerships</i>	<i>Common Strategic Issues Identified</i>	<i>Outcomes</i>	<i>How the Local Plan has been influenced</i>
Coal Authority	None	None	<ul style="list-style-type: none"> • Response received to Preferred Option Consultation. Council aware of land affected by instability due to coal mining legacy 	<ul style="list-style-type: none"> • Continue to consult on planning applications in consultation area 	<ul style="list-style-type: none"> • Coal Consultation areas and need to take account of possible remedial measures in new development.
National Forest Company	<ul style="list-style-type: none"> • Local Plan Policy and CIL Viability Study 2013 • ESBC input to National Forest Strategy 2004 - 2014; • Guide for Developers and Planners 2012 • Planting Guidelines 	<ul style="list-style-type: none"> • Central Rivers Initiative(NFC and Lichfield, Tamworth, S. Derbyshire • Ongoing planting projects 	<ul style="list-style-type: none"> • Speed of aggregate extraction in CRI area could delay restoration projects • Close ongoing liaison re projects in Borough, and funding from developers, and those in CRI • Future funding through s.106/CIL 	<ul style="list-style-type: none"> • Common, aligned approach to planting and developer negotiations across local authorities has been achieved. • Continued partnership approach to delivery of the Strategy • Draft policies reviewed 	<ul style="list-style-type: none"> • Policies shaped as a result of NFC comments. Planting guidelines are included within the Local Plan document
Central Rivers Initiative	<ul style="list-style-type: none"> • Central Rivers Area Strategy Update Dec 2008 	<ul style="list-style-type: none"> • ESBC is member of this partnership to achieve 	<ul style="list-style-type: none"> • Speed of aggregate extraction in CRI area could delay restoration projects • Future funding through 	<ul style="list-style-type: none"> • Ongoing membership and active contribution to future strategy and project decisions 	<ul style="list-style-type: none"> • Policies shaped as a result of CRI comments at consultation

Body/Partner	Joint Evidence	Partnerships	Common Strategic Issues Identified	Outcomes	How the Local Plan has been influenced
		regeneration of areas following aggregate extraction within washlands of Trent and its tributaries	s.106/CIL		
Network Rail	None	None	<ul style="list-style-type: none"> • Contacted, asking if any issues regarding service revisions on rail line into Birmingham. No reply, so assume no issues. 	None	
Staffordshire Wildlife Trust	<ul style="list-style-type: none"> • East Staffs Biodiversity Opportunity Mapping (meets para 114 of NPPF) • Staffordshire Biodiversity Action Plan 	<ul style="list-style-type: none"> • Working with Staffordshire Local Nature Partnership (LNP) 	<ul style="list-style-type: none"> • Staffordshire Nature Improvement Area • Local Nature Partnerships - (see above) 	<ul style="list-style-type: none"> • Ongoing liaison on LNPs and on biodiversity issues crossing boundaries 	<ul style="list-style-type: none"> • The Local Plan, through the strategy and implementation of several policies (particularly for biodiversity, green infrastructure) and joint working with SWT on biodiversity opportunity mapping have ensured that the Local Plan supports para 114 of the NPPF and the Natural Environment and Rural

Body/Partner	Joint Evidence	Partnerships	Common Strategic Issues Identified	Outcomes	How the Local Plan has been influenced
					Communities Act 2006 which states that decision-makers such as local authorities, have regard to the conservation of biodiversity in England, when carrying out their normal functions.
Severn Trent Water	<ul style="list-style-type: none"> • Water Cycle Strategy • Strategic Flood Risk Assessment 	<ul style="list-style-type: none"> • Discussions with ESBC consultants undertaking the Infrastructure Delivery Plan have taken place 	<ul style="list-style-type: none"> • No issues identified either through SFRA or WCS 		<ul style="list-style-type: none"> • Input into Infrastructure Delivery Plan and Water Cycle Strategy • Strategic Flood Risk Assessment
South Staffordshire Water	<ul style="list-style-type: none"> • Water Cycle Strategy • Strategic Flood Risk Assessment 	<ul style="list-style-type: none"> • Discussions with ESBC consultants undertaking the Infrastructure Delivery Plan 	<ul style="list-style-type: none"> • No issues identified either through SFRA or WCS 		<ul style="list-style-type: none"> • Input into Infrastructure Delivery Plan and Water Cycle Strategy • Strategic Flood Risk Assessment

Body/Partner	Joint Evidence	Partnerships	Common Strategic Issues Identified	Outcomes	How the Local Plan has been influenced
		have taken place			
National Grid	None	<ul style="list-style-type: none"> Discussions with ESBC consultants undertaking the Infrastructure Delivery Plan have taken place 	<ul style="list-style-type: none"> No outstanding issues 	<ul style="list-style-type: none"> Continued liaison to ensure gas infrastructure planned for and in place for new development 	
BT	None	East Staffordshire is part of the Superfast Broadband Initiative which is being rolled out across Staffordshire.	<ul style="list-style-type: none"> Rural broadband access Ongoing liaison to ensure any upgrading of, or additional, infrastructure supply for additional development proposed in Local Plan is deliverable and in place in time. 	<ul style="list-style-type: none"> Continued liaison to ensure issues are addressed 	<ul style="list-style-type: none"> Identification in Plan of poor broadband access in some parts of Borough as a hindrance to growth of rural economy.
Western Power Transmission	None	<ul style="list-style-type: none"> Discussions with ESBC consultants undertaking the Infrastructure Delivery Plan 	<ul style="list-style-type: none"> Need for additional sub-stations to serve development identified 	<ul style="list-style-type: none"> Inclusion in Infrastructure Delivery Plan 	<ul style="list-style-type: none"> Provision included in Infrastructure Delivery Plan.

Body/Partner	Joint Evidence	Partnerships	Common Strategic Issues Identified	Outcomes	How the Local Plan has been influenced
		have taken place			
Mobile Operators Association	None	None	<ul style="list-style-type: none"> • None so far – response made to Local Plan consultation 	<ul style="list-style-type: none"> • Ongoing liaison to ensure any upgrading of, or additional, infrastructure supply for additional development proposed in Local Plan is deliverable and in place in time. 	-
Bus and Rail operators with Cross-boundary services <ul style="list-style-type: none"> - Arriva Cross Country Rail - Arriva Buses - Trent Barton Buses - Midland Classic - First Buses 	None	<ul style="list-style-type: none"> • Through SCC as Transportation Authority 	<ul style="list-style-type: none"> • Bus services to serve new communities right from outset, to link to destinations within and outside Borough • Possible increase in rail patronage 	<ul style="list-style-type: none"> • Liaison via SCC Transportation 	<ul style="list-style-type: none"> • Need for transport networks to be in place as major new urban extensions begin to be occupied identified in urban extension policy

TABLE 1c

PARTNERSHIP ON LOCAL PLAN EVIDENCE BASE DOCUMENTS THAT HAVE CROSS-BOUNDARY IMPLICATIONS

<i>Document</i>	<i>Strategic Issues</i>	<i>Partners</i>	<i>Outcomes</i>
Strategic Housing Market Analysis	Housing markets cross boundaries, mainly into S. Derbyshire but also into other neighbouring authority areas	Neighbouring authorities, housebuilders and registered providers of social housing active in Borough, development agents. Dialogue between GVA/Edge Analytics/GLHearn study for ESBC, and the Derby HMA Housing Study by GL Hearn, with both methodologies considering cross-border relationships.	Discussed with neighbouring authorities. Since effects of proposed major housing allocations taken on board in coming to Local Plan's housing requirement, no further action required except when study refreshed in due course. Statement of Common Ground with Derby HMA authorities and North West Leicestershire District Council. Provision of objectively assessed housing need
Sustainability Appraisal	The three Strategic Environmental Assessment (SEA) consultation bodies - Natural England, English Heritage and Environment Agency - have been consulted on each Sustainability Appraisal document. They have made comments which reflect their responsibilities for areas wider than East Staffordshire.	Natural England, English Heritage and the Environment Agency	Inputs from the three bodies helped to refine the SA which then has been used as evidence base in shaping the Local Plan's spatial strategy, strategic site allocations and policies.

Document	Strategic Issues	Partners	Outcomes
Strategic Flood Risk Assessment and Water Cycle Study	Development upstream on watercourses through Borough may affect flood risk; development in Borough may affect flood risk downstream outside Borough. Increased water abstraction for new development may cause supply issues out of Borough	Environment Agency, water companies, County Council	Water quality policy in Local Plan. No major flood defence issues highlighted – Local Plan policies cover local flood defence measures such as SuDS. Ongoing liaison/monitoring
Statutory Transport Plan/East Staffordshire Integrated Transport Strategy/Burton and Uttoxeter traffic flow modelling	Increased development in the Borough – and in neighbouring areas will have effects on trans-boundary transport infrastructure	Produced by Staffs County Council, liaising with Highways Agency, Network Rail, Arriva, neighbouring planning authorities	ITS sets out expenditure plans for up to 2028 on transportation investment. Links to Local Plan proposals infrastructure needs and Infrastructure Delivery Plan
Employment Land Review (ELR)	The amount of strategic employment land needed in the Borough is influenced by demand, availability and planned allocations elsewhere	Neighbouring authorities, employment agents active in Borough. Round table held with neighbouring authorities.	No further action apart from continuing to monitor and liaise with other authorities' ELRs and updates of them.
Retail and Leisure Study	Retail and leisure catchment areas for Burton and Uttoxeter extend into neighbouring areas, and conversely, the catchments of towns such as Swadlincote and Lichfield overlap into East	Commitments in neighbouring areas within the identified catchment areas of Burton and Uttoxeter town centres taken into account in assessing capacity for further retail	No further action apart from continuing to monitor and liaise with other authorities' Retail & Leisure Studies and updates of them

Document	Strategic Issues	Partners	Outcomes
	Staffordshire.	development in the Borough.	
Local Plan and Community Infrastructure Levy Viability Testing	Land values and development potential in surrounding districts can affect values and deliverability in East Staffs	All surrounding local authorities, NFC and Sport England invited to workshop at early stage of work. Staffs Moorlands DC, as a neighbouring authority, had no comment at this stage. NFC, as a beneficiary of s.106 and potentially CIL monies, attended event and contributed to work.	CIL and Plan viability work feeds into Local Plan –no issues raised affecting other authorities; NFC comments taken on board.
Infrastructure Delivery Plan	Infrastructure needs of Local Plan in Borough may have consequences outside the Borough	Infrastructure delivery agents, including County, contacted by consultants to ascertain infrastructure needs of Local Plan proposals.	No cross boundary issues identified. No further action required except for ongoing monitoring/ liaising.
Greenspace Strategy/Outdoor Sports and Infrastructure Plan/Facilities Planning Modelling – indoor sports halls and pools	Demand for facilities and hinterlands of existing facilities cross boundaries.	Consultants involved stakeholders and identified where demand for facilities was currently having to be met outside Borough (Outdoor Sports & Infrastructure Plan), Sport England	No major issues cross boundary identified. No further action required except for ongoing monitoring/ liaising.
Staffs County-wide Renewable/Low Carbon Energy Study	Assessing potential for renewable energy and low carbon schemes throughout the County	Staffordshire Renewable Steering Group - all Staffordshire districts and County Council.	Group identified need to link the output of this Study (especially locations for particular types of energy generator and cumulative effects) with ongoing work on landscape character (see below)

Document	Strategic Issues	Partners	Outcomes
Gypsy & Traveller Accommodation Assessment	Links between gypsies and travellers in South Derbyshire and East Staffordshire	Derbyshire Gypsy Liaison Group, Derbyshire CC and all Derbyshire districts.	Ongoing liaison on need to provide for new pitches – feeding into policy in Local Plan
Cannock Chase Special Area of Conservation (SAC) Evidence base	Potential effects on ecosystem of Cannock Chase by development in districts several km away from it.	Cannock Chase AONB Partnership, Natural England, Staffs CC, Cannock Chase DC, South Staffs. DC, Stafford BC, Wolverhampton City Council, Dudley MB, Walsall MB, Dudley MB, Sandwell MB, Birmingham City Council, Forestry Commission	Policy in Local Plan, ongoing membership of Partnership - to produce SPD for adoption by all district/borough members.
Biodiversity Opportunity Mapping	Assessment of habitats, including those that are cross-boundary.	Environment Agency, Staffs Wildlife Trust, Staffs County Council	No significant cross-boundary issues identified.
Strategic Plan for Recovery and Growth (formerly Strategic Spatial Framework Plan)	High level objectives and policies for spatial planning to promote sustainable economic recovery with options for how growth might distributed through the LEP area.	GBSLEP	Ongoing input in shaping the Plan which is out to consultation.
Landscape Characterisation Assessment	Evidence base for identifying particularly sensitive landscapes where development will need particular control – some landscape types may straddle boundaries	All Staffordshire districts and County Council.	Study still awaited from SCC.

Document	Strategic Issues	Partners	Outcomes
Extensive Urban Survey/Historic Environment Assessment	Some historic environments are close to boundary e.g. Tutbury, Rolleston on Dove	SCC and English Heritage	No issues identified. Policy in Local Plan.
Burton upon Trent School Planning	School catchment areas cross Borough boundaries.	SCC	Continued liaison with SCC to ensure any cross-boundary issues into Derbyshire are dealt with by their liaising with DCC. Appropriate policy in Local Plan
Habitat Regulations Assessment	Mainly relationship with Cannock Chase SAC. Other European designated areas are not affected by development in ESBC.	Cannock Chase SAC Partnership	Policy in Local Plan, ongoing membership of Partnership - to produce SPD for adoption by all district members.
Green Infrastructure Study	GI corridors across and out of Borough (mainly Trent Valley)	Workshop involving Natural England, Forestry Commission, National Forest Company, Staffordshire Wildlife Trust	Has led to Local Plan policies on GI. Trent Valley GI covered by Central Rivers Initiative partnership. Need to discuss possible corridors into Derbyshire with DCC and Districts.